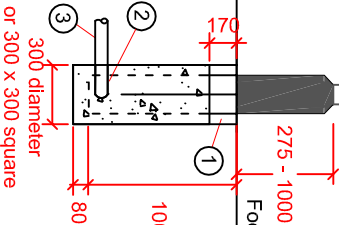


(or similar ap-
coated tubular
plain column.

Anti-light spill shroud permanently fixed to beacon.



1) All dimensions are in millimetres

- 2) The globe and post shall comply with the diagram number 4007 of the Traffic Sign Regulations and General Directions 2016.

- 3) Exact location to be agreed on site with the Service Manager before works commence.

- 4) Foundation requirements are to be in accordance with the manufacturers instructions.

- 5) The minimum depth of cover for ducting (electrical supply) is 750mm in the carriageway and 450mm in the footway.

- 6) Orientation and duct entry positions to be agreed with the Service Manager.

- 7) If possible, the wide base post inspection chamber should be mounted on the opposite side to approaching traffic.

- 8) Column and lantern canopy to be black in colour.

- 9) Column to be marked with a unique identifying asset number. Shropshire Council Lighting to confirm numbers on site by site drawings.

Additional Notes (Foundation)

- ① Reinstate surface in like for like materials and thicknesses
- ② STZ concrete
- ③ 50mm duct through foundation, pull cord to be provided through duct into post base unit.