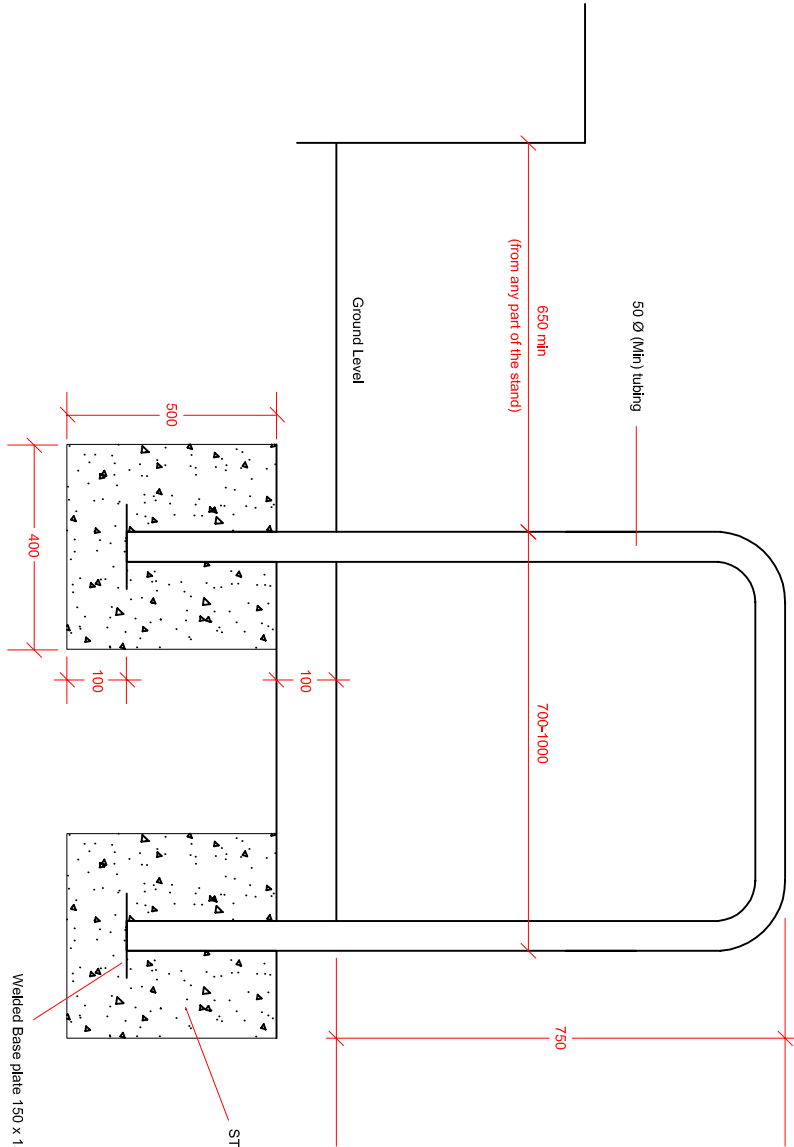
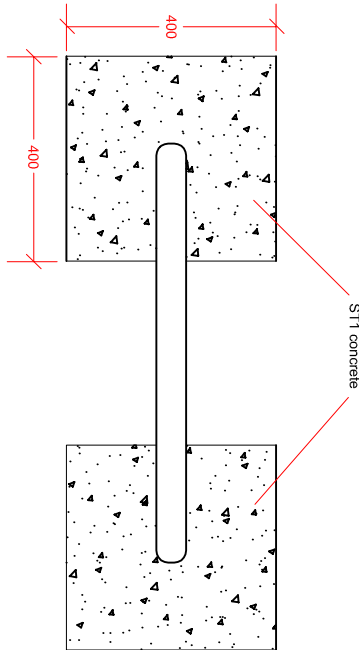


Section View



Plan View



Notes:

1. All dimensions are in millimetres
2. Material to be hot dip galvanised steel to BS EN ISO 1461 (coloured black) or stainless steel
3. Thickness of tubing wall to be 2.5m
4. Minimum clearance of 1000mm between consecutive stands

Drawing Title:



# Standard Detail Cycle Stand

Version	A	Concrete foundation grade changed
Checked By:	R.Harman	Drawing Number: SD-1200-10
Oct 16		Version: A