



Shropshire Council's Children's Services are rated

**OUTSTANDING**

By providing our children and young people with respect, love and trust, and with the right support and encouragement, we can help them to become confident, resilient and thriving individuals who are able to lead happy and successful lives.

Ofsted  
Outstanding  
Provider

Shropshire

# TREES Newsletter

## Together Reducing & Ending Exploitation in Shropshire

Issue 19 • Winter/Spring 2026

### QUICK LINKS



**WEST MERCIA  
POLICE**



**West Mercia  
Youth Justice  
Service**



**The Children's Society  
Steer Clear**

**withyou**



**West Midlands  
Regional  
Safeguarding  
Partnership**

Welcome to the Winter/Spring edition of the TREES Newsletter 2026!

A **Happy New Year** to all our regular subscribers, colleagues, professionals, parents and carers who help us everyday in ensuring Shropshire's young people are able to thrive.

There's a lot of information packed in this newsletter so please take your time in digesting what's here! Despite increasing national and local financial pressures, Shropshire remains dedicated to providing high quality, timely and relevant support to young people experiencing exploitation.

Overall referrals into the Local Authority have remained consistent when compared to last year. Social Workers during this period have really dedicated themselves to ensuring reviews are completed promptly, and overall the quality of referrals has greatly improved - so thank you.

We have a few things in the pipeline, including a new CE training programme, revised website, and very importantly we will be sharing an agenda of free training and events for **National Exploitation Awareness day (March 18th)** - please keep a eye out for further information!

**TREES WEBSITE**



# Current patterns and emerging themes

## Update from Clare Jervis, CE & Missing Operational Lead

This quarter saw 93 referrals, which is in line with what we saw in the same quarter 2024. However a notable 80% of the referrals received came out at “Low—Vulnerable to Exploitation” which continues to demonstrate a real dedication from professionals recognising early indicators of exploitation.

Conversely only 7% came out as “High—Exploited” and 13% as “Medium—Groomed & Targeted” which directly evidences that Shropshire’s efforts in **reducing exploitation are working**.

Child Sexual Exploitation (CSE) appears under identified, which reflects a national pattern and was similarly noted in previous quarters in Shropshire. Professionals may benefit from additional training to recognise subtle, relational, or non-disclosure based indicators of CSE.

Clear correlations are emerging between missing episodes and being out of education, mirroring patterns seen in last quarter’s report. Many are *not reported missing at all*, only discovered after the fact.

Operationally, December included an “Operation Make Safe” hotel test purchase exercise using volunteers to simulate potential CSE scenarios; all four hotels visited failed to recognise indicators of exploitation, prompting TREES and police to offer training and share findings with the National Working Group to strengthen awareness and response.

There were quickly shifting trends with ketamine, alcohol, cannabis, cocaine, ‘THC vapes’, synthetic opioids, illegal over-the-counter medication, **Most worryingly—aerosol usage was unusually mentioned among several young people**. Illegal websites (or legal popular ecommerce platforms) selling these substances is not uncommon now. Young people are being influenced via TikTok to complete dangerous ‘challenges’ regarding drugs.

## Hot Spots of concern

Recent referrals and intel have identified the following areas of concern. Disruption tactics will be considered as part of regular multi-agency meetings, but if you hear about or witness anything concerning in these areas, please be alert and report any concerns as intel (please see **Page 3** for more information on how to do this)

### Shropshire

Shrewsbury; Shrewsbury Town Centre, Middlegate, Grange, Town Bus Station (the opposite steps), Meadow Farm Drive, Broseley Town Centre (public toilets), MUGA Broseley, Broxton’s Wood (Whitchurch), Jubilee Park Whitchurch, Whittington, St. Martins, Tesco’s Ellesmere, Column nr Shirehall

### Other areas

Telford Town Centre, Kidderminster, Wolverhampton





There may be behaviour that you witness in communities that cause you to be concerned that unknown children are being exploited, such as activity around associates, addresses or locations.

If you have information about any anti-social or criminal activity or behaviour (even where you do not know who is at risk or of concern) which indicates that child exploitation may be occurring, please ensure you pass this information to West Mercia Police as soon as possible to enable them to prevent and detect crime (s115 Crime and Disorder Act 1998). Please provide names if you are aware of them, and as much detail as possible—in particular children and young people who may already be known to children's services or the police.

The below methods can also be used for reporting concerns:

- Where you think there is an immediate risk to a person or you witness a crime taking place, phone **999** (or dial 55 if you are unable to talk).
- Report under the **"Tell Us About" section on the West Mercia Police website** or phone **101**.
- Anonymously to Crimestoppers online at **<https://crimestoppers-uk.org>** or by calling **0800 555111**.
- Children, their families and/or other members of the community may be worried about sharing information about crime with the police, but you can encourage them to do so anonymously by signposting them to Crimestoppers, or Fearless for young people - **[www.fearless.org](http://www.fearless.org)**
- If you are a professional, please email the information directly to the Shropshire CE Team at: **[CETeamShropshire@westmercia.police.uk](mailto:CETeamShropshire@westmercia.police.uk)** (please note that this inbox is only monitored on weekdays between 8am – 4pm) or call the team on 01743 237413.

**Please note: Where you have child specific information which suggests that a child is at risk of or experiencing harm as a result of exploitation, you must follow the Child Exploitation Pathway and pass information related to criminal activity or behaviour posing a risk to West Mercia Police.**

## What is classed as intelligence?

Both information and intelligence are welcome, here is a useful summary to describe each:

**Information:** *Something that is learned or provided about something or someone. Information is defined as knowledge gained through experience or study; facts or knowledge provided or learned; knowledge of specific and timely events or situations, news. Information can relate to all forms of processed data and can include intelligence.*

**Intelligence:** *The analytics (interpretation of meaningful patterns) of information gathered from many sources. This is information that has been compiled, analysed, and/or disseminated to anticipate, prevent, or monitor criminal activity. It is information that has been subject to a defined evaluation and risk assessment process in order to assist with police decision making. This is to supply robust, verifiable information which can be evaluated, assessed for risk and then acted upon.*

# Operation Makesafe

Officers in Shrewsbury, carried out covert 'mystery shopper' style visits to four large chain hotels on 9 December, as part of a national initiative to prevent child sexual exploitation.

Operation Makesafe is a national programme which aims to help prevent child sexual exploitation through engaging with and educating businesses such as hotels, pubs and taxi companies on the warning signs they can look out for.

The multi-agency operation was carried out by West Mercia Police's Child Exploitation Team and Shropshire Local Authority TREES Team (Together Reducing and Ending Exploitation in Shropshire).

Child volunteers, Izzy and Ruby, playing the role of exploited children and plain clothed police officers, acting as perpetrators of child sexual exploitation, conducted 'test purchases' of hotel rooms, in order to see if staff could identify any child exploitation concerns. Thank you both for their time and efforts—they did great!

The results of the operation will be shared with the National Child Sexual Exploitation Task Force. West Mercia Police will contact the hotels and offer additional training where gaps were identified.

Detective Sergeant Jon Statham said: "We know that offenders use hotels to commit child sexual exploitation due to the privacy and anonymity hotels can provide.

"In 2023 over 500 child sexual abuse offences took place in hotels. Operation Makesafe helps forces to empower businesses and their staff to identify potential victims and report their concerns to the police. By encouraging hotel staff to be our eyes and ears we can prevent children becoming victims of child sexual exploitation and seek to prosecute those responsible.

"This is invaluable in protecting young people and it's vital those who are in a prime position to spot the signs, know what they are looking out for and how to flag them to us. We will continue to work with hotels and other businesses to ensure they have the necessary training to help keep young people safe."

Exploitation and vulnerability training workshops are available to anyone living or working within the West Mercia Police force area, and cover various aspects of vulnerability and how to spot the signs and symptoms of exploitation. Further information on dates and how to book is available on our website- [Exploitation and vulnerability training | West Mercia Police](#).

**Anyone who is worried that a child may be involved in child exploitation should report their concerns to police. Alternatively, if you have information but don't feel comfortable speaking to police, you can speak to the independent charity Crimestoppers. It is 100% anonymous, they never ask your name, and they cannot trace your call or IP address. You can contact them online or by calling 0800 555 111.**



# Making Words Matter.

[Making Words Matter](#)

[BARNARDOS LANGUAGE MATTERS](#)

[Why language matters: how the label 'older boyfriend' can mask child sexual exploitation | NSPCC Learning](#)

[Child Exploitation Language Guide | The Children's Society](#)

[illegible]

# Making Words Matter.

[Making Words Matter](#)

[BARNARDOS LANGUAGE MATTERS](#)

[Why language matters: how the label 'older boyfriend' can mask child sexual exploitation | NSPCC Learning](#)

[Child Exploitation Language Guide | The Children's Society](#)

[illegible]

# Making Words Matter.

**MAKING  
WORDS  
MATTER**

[Making Words Matter](#)

**BARNARDOS**

[BARNARDOS LANGUAGE MATTERS](#)

**NSPCC  
Learning**

[Why language matters: how the label 'older boyfriend' can mask child sexual exploitation | NSPCC Learning](#)

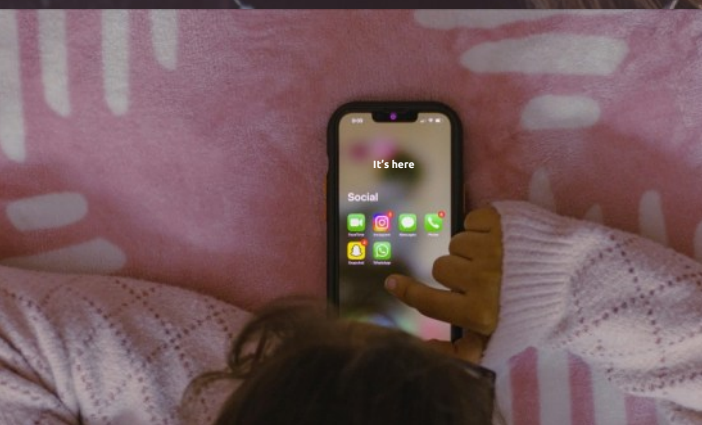
The  
Children's  
Society

[Child Exploitation Language Guide | The Children's Society](#)



It might be here

# Where has CSE gone?



**We hope the answer is obvious - it hasn't gone anywhere. It's up to professionals, parents and carers to remain curious, educating themselves and others to ensure effective safeguarding of our young people.**



[Click to find out more...](#)



# ALTERNATIVE PROVISION AT THE HIVE



## WHAT IS ALTERNATIVE PROVISION?

We offer a safe creative space away from formal education for children who are struggling with attendance. The local authority can provide funding to support those with an EHCP, EOTAS package or with care experience who are struggling to cope with change, are anxious, have SEMH needs, need to develop social skills, or are electively home-educated.

Our alternative curriculum is designed to help children and young people stay in school, engage better with home-schooling or build the trust, routine and thirst for learning in those struggling to engage with education.



## WHY ARE WE DIFFERENT?

The Hive offers a relaxed, vibrant and flexible non-academic setting to explore the arts. This allows us to provide the conditions for learners to trust, explore, play, experiment and grow their social and emotional skills, empowering them to embrace their next stage in life.

We believe every child and young person deserves to find their place in the world through establishing their identity, developing healthy relationships with peers and adults whilst discovering a community they feel part of. We cater to individual needs by recognising unique circumstances and life experiences whilst being open to different learning styles and special interests. Diversity is championed, honesty is valued, young people's voices are heard, and social & emotional development are embedded in each interaction.





## HOW DOES IT WORK?

We can support individuals for a full or half day (2 to 4 hours) each week, both on a 1-2-1 basis or in a small group. Each leader is chosen based on the learner's needs. They apply a mentor style of teaching whilst collectively having many years of industry knowledge, relevant life experience, and technical qualifications. Learners can choose from a curriculum based around activities such as DJing, singing, rapping, recording, songwriting, drumming, photography, videography, graphic design, printmaking and so much more! Learning that incorporates core subjects is highlighted and celebrated whenever possible.

## HOW CAN WE HELP?

We can reignite the thirst for learning and the joy of engaging outside of the home. We encourage growth in personal, social and academic development through a better understanding of themselves, whilst supporting appropriate communication of their needs to those around them. We help them overcome barriers to engagement by improving motivation & attendance whilst guiding them away from the anxiety that's preventing them from thriving. All support focuses on building resilience, growth and a sense of belonging whilst celebrating collaboration and honouring responsibilities.



## HOW DO REFERRALS WORK?

To ensure funding is available, we encourage parents, carers and teachers to work directly with the local authority and any connected education settings. We can collaborate with both mainstream and specialist schools alongside other AP providers and can also be built into EOTAS packages. Our referral process is simple and we encourage adults to involve the children and young people in this process to establish if we are suitable for their learning needs. Spaces are limited to guarantee quality provision.

**WANT TO KNOW MORE? GET IN TOUCH FOR A CHAT, OR TO COME AND HAVE A LOOK AROUND. ACCESS BY REFERRAL, CONTACT AMY, OUR YOUTH ENGAGEMENT LEAD BY EMAILING [PROJECTS@HIVEONLINE.ORG.UK](mailto:PROJECTS@HIVEONLINE.ORG.UK)**

# TikTok 'Challenges'

A national US analysis (Nov 2025) found 95% of teens are exposed to dangerous social media challenges, with related injuries doubling since 2020. These include poisoning, trauma and self-asphyxiation, driven by viral trends like the "Blackout Challenge" and medication misuse challenges. In the UK, we expect very similar social media algorithms encouraging the same, and this has been evidenced through CE Risk Assessments the past few months.

The ICO is investigating how TikTok's recommendation systems push inappropriate or harmful content to UK children, reinforcing concerns around safety and data use. [The government has issued a public warning.](#)

New experimental research published in the Irish Journal of Medical Science (2025) tested TikTok's recommendation system using controlled teen accounts. The study found that even accounts set up as 13 year olds were algorithmically pushed content involving drugs, alcohol, self-harm and high-risk behaviours, despite TikTok's stated youth safety guidelines. The algorithm often recommended harmful content within minutes, highlighting the platform's inability to adequately filter risk for minors.

## What Parents and Professionals Can Do

- Open conversations early - children exposed to risk benefit from consistent checking-in.
- Monitor algorithmic exposure - the "For You" page can escalate quickly.
- Teach digital critical thinking - help children question what they see online.
- Encourage balanced screen habits to reduce vulnerability to harmful content.

# Independent Modern Slavery Advocate (IMSA)

Providing interim support to adult survivors of all types of exploitation across West Mercia.



**victimsupport.org.uk**

We are an **independent** charity offering **free, confidential** support to people affected by crime and traumatic incidents.

For information and support, contact us by:

- calling: Supportline **08 08 16 89 111**
- using our 24/7 live chat service: **victimsupport.org.uk/live-chat**
- using BSL: **victimsupport.org.uk/bsl**
- Online: **victimsupport.org.uk**

To find out how you can help us, visit **victimsupport.org.uk/get-involved**

 **@VictimSupport**

 **VictimSupport**

 **victimsupport\_uk**

 **Linkedin.com/company/victim-support**

Published by Victim Support  
President HRH The Princess Royal

Victim Support, Ground Floor, Building 3, Eastern Business Park,  
Wern Fawr Lane, Old St Mellons, Cardiff CF3 5EA  
Telephone: 020 7268 0200

Charity registration: 298028 Company no: 2158780  
Registered in England. Limited by guarantee.  
Registered office as above.

**The Independent Modern Slavery Advocate (IMSA) provides interim support to adult survivors of all types of exploitation across West Mercia. The IMSA is independent of the police and government.**

## What is modern slavery?

Modern slavery is the umbrella term used to describe the different types of exploitation which includes:

- Forced labour/labour exploitation
- Criminal exploitation
- Domestic servitude
- Sexual exploitation
- Debt bondage
- Human trafficking
- Forced marriage.

Modern slavery is a serious crime and is on the rise globally. The United Nations estimate that more than 50 million people are in modern slavery worldwide.

Modern slavery refers to situations where through violence, threats, manipulation, or through abuse of power, someone is forced to do something for another's financial or material gain.

Modern slavery exists in almost all countries of the world and is a major issue in the UK and in all areas of West Mercia.

are equipped to tackle the issue, offenders are appropriately punished, and survivors have access to specialist protection and support. Support for survivors of modern slavery is principally through the National Referral Mechanism.

## What is the National Referral Mechanism (NRM)?

The NRM is the UK's national framework for identifying and providing support to anyone who has been a victim of modern slavery.

Only First Responder organisations can refer someone into the NRM. Adults must consent to a referral. Children do not consent and are automatically referred.

Once referred, a person then waits for the first of two decisions. The Reasonable Grounds decision, is where they are believed to either be a victim of modern slavery (positive) or not believed to be (negative). If they receive a positive reasonable grounds decision that person is eligible for support through the Modern Slavery Victims Care Contract (MSVCC). This support can include accommodation, financial, emotional support, access to physical and mental health services, and legal and migration assistance. This support is provided while the person waits for the Conclusive Grounds decision.

## What does an Independent Modern Slavery Advocate do?

The IMSA provides support to survivors of exploitation and works to increase awareness about modern day slavery and support options across West Mercia.

IMSA's work alongside the NRM by providing short term interim support to anyone before they are referred to the NRM, if they do not consent to an NRM referral, if they receive a negative reasonable grounds decision, or if they are not eligible to be referred to the NRM.

We work with adult men and women, pre-NRM, and we are one of the few organisations who work with survivors who are in custody. A person must consent to IMSA support.

Though Victim Support is not a First Responder organisation, the IMSA can assist officers or other first responder organisations by gathering information from victims and can assist and support with the NRM referral process.

The IMSA programme also works with partner organisations across West Mercia to raise awareness about modern-day slavery, best practice to support survivors, to identify people who may be at risk, and to work collaboratively to combat the root causes of all types of exploitation.

## How to contact us

### Tel:

01905 726896 or

07562 687630

(9am–5pm, Monday to Friday)

### Email:

[claire.kendall@victimsupport.org.uk](mailto:claire.kendall@victimsupport.org.uk)

[mdswestmercia@victimsupport.cjsm.net](mailto:mdswestmercia@victimsupport.cjsm.net)

### Online:

[victimsupport.org.uk/resources/west-mercia](https://victimsupport.org.uk/resources/west-mercia)

### Support line:

Tel: 08 08 16 89 111 (Free, 24/7)

Live chat: [victimsupport.org.uk/live-chat](https://victimsupport.org.uk/live-chat)

(Free, 24/7)

## Other useful numbers

**Modern slavery and exploitation helpline:**

**08000 121 700** (Free, 24/7)

**CrimeStoppers:**

**0800 555 111** (Free, 24/7)

# Child Exploitation Awareness Day

## 18th March 2026

To mark the National Child Exploitation Awareness Day on Wednesday 18th March, TREES are arranging a virtual event via Microsoft Teams consisting of a range of engaging sessions/webinars across the day, to promote awareness of child sexual exploitation and criminal exploitation within Shropshire.

The event will be open to partner agencies including social care staff, health and education professionals, and police colleagues - who are welcome to either attend the whole day, or drop-in to sessions.

## How you can get involved

- If you're interested in attending, get in touch with us to add your name to the TREES mailing list to receive full details of the event once the schedule for the day has been finalised.
- If you're able to present a session, get in touch with us by **Friday 6<sup>th</sup> February** to see if any timeslots are available.

We're keen to make this an interactive, interesting, and thought-provoking event, so if you have any other ideas or suggestions, please do get in touch at [childexploitation@shropshire.gov.uk](mailto:childexploitation@shropshire.gov.uk)

## Celebrating Success



George our NRM Coordinator in the TREES Team, was recently awarded a **High Sheriff's Award** "in recognition of great and valuable services to the community. The award also recognises the appreciation of the residents and people of Shropshire for activity and contributions in enhancing the life of the community."

### The High Sheriff of Shropshire said;

"George has shown excellence in safeguarding across Shropshire, strengthening protection systems and raising awareness of exploitation, significantly enhancing the county's ability to protect children. He now coordinates Shropshire's role in a pilot site for Devolved National Referral Mechanism Decision Making, ensuring faster and more child focused responses, his expertise, commitment and collaborative approach have already had a profound local impact."

# Aerosols **Warning** for young people in Shropshire

Emma Chant - With You



Immediate symptoms of solvent abuse can include:

- Slurred speech
- Dilated pupils
- Euphoria
- Coordination difficulties
- Drowsiness or feeling dizzy
- Nausea or vomiting
- Irritability
- Hallucinations or delusions
- Catastrophic organ failure

Solvent use is the inhaling of dangerous chemicals; such as those found in aerosols, glues or nail varnish. This is done directly from cans or other containers or through plastic/paper bags. This is known as sniffing or huffing.

The newly circulating name for the use of aerosols specifically, usually deodorant, is CHROMING. This trend is gaining traction on social media, most commonly TikTok and young people are increasingly reporting trying Chroming after seeing a video and becoming curious.

Anyone experimenting with solvents is at risk of **sudden death**, even on their first try. Sudden death can occur by suffocation or asphyxiation, either from choking on vomit or from covering the nose and mouth whilst inhaling, or using in an enclosed space.

Burns injuries can result from using highly flammable solvents and can ultimately lead to death. Additionally, aerosol cans can become very cold when being inhaled so direct contact with the nose and mouth can cause cold burns in those areas. Fatal accidents can also occur from the loss of coordination and dizziness that can be experienced.

However, the most common reason for sudden death with solvent use is a heart condition called 'cardiac arrhythmia' - known as 'Sudden Sniffing Death Syndrome'. Inhalants can cause the heart to beat irregularly, which combined with a rush of adrenaline from excitement, fear or physical activity can cause the heart to fail. Without a defibrillator to hand, death can occur within minutes.

There is no safe way to use solvents due to the risks of sudden death mentioned above. However, if a young person is using aerosols there are a few things they can do to help reduce other side effects. Not mixing solvents with alcohol or other substances and using in a safe place with people they trust are the basic harm reduction tips for all substance use. Additionally, taking a short break between inhales can help to maintain oxygen intake and using a towel or piece of clothing over an aerosol can help to prevent cold burns.

It is important for professionals to relay to young people the dangers of partaking in this trend and deliver the immediate harm reduction advice given above, due to the risks of continued use. Following initial harm reduction advice, signpost to Re-Solv for online advice and a referral should be made to We Are With You via the SMARTER screening tool for ongoing support.

# Drug Warnings



**January 2026**

"Pink Cocaine" also known as 'tusi' or 'tucci') as the drug was pink, but '2CB' was also mentioned.

'Pink cocaine' is not cocaine most of the time. 'It's usually a mix of different drugs, and what's in it can change batch to batch, which makes it riskier than a single known substance. It has commonly been found to contain ketamine plus other stimulants/empathogens.'

'2CB' belongs to the "2C" family of phenethylamines and is known by street names such as 'Nexus', 'Bromo', 'Toonies', and 'Venus'.

**December 2025 (although this is ongoing)**

Ketamine remains popular amongst young people. The government have recently collaborated to publish warnings around ketamine use which can be found via the image/link below.



**October-November (and ongoing)**

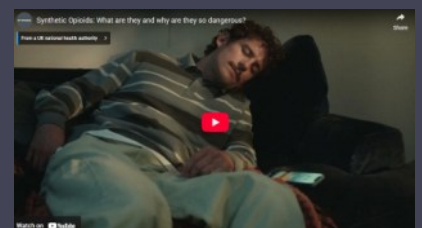
'THC Vapes', 'Carts' or like examples to the left of 'Penjamin' pens are discreet vapes which are disguised to look simply like a pen.

THC vapes sold to young people often contain SCRA (Spice). In Greater Manchester first issued warnings about this in 2018. THC vapes were a focus of the last GM-TRENDS which showed in most, but not all cases, the product was purchased as THC rather than as SCRA (Spice) Last year a study found vapes and vape liquids containing synthetic cannabinoids were identified in three quarters of 27 secondary schools in England that were sampled, in total 17.4% of 512 samples, with just 1.2% being THC.

**December 2025 (although this is ongoing)**

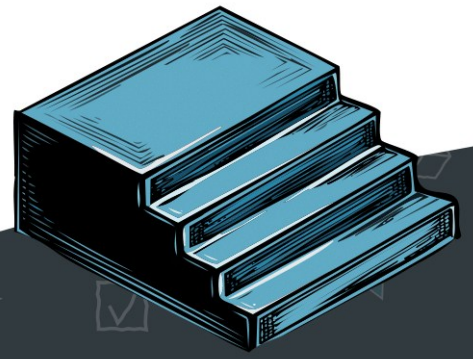
Drugs that contain 'nitazenes' are killing people across the UK. These are highly dangerous synthetic opioids which have been found in a wide range of drugs that people have taken on nights out, to help them sleep or to self-medicate.

Counterfeit medicines which are made to look like real medicines – such as Oxycodone or Percocet, have been found with these dangerous 'nitazenes' within them without people knowing. Nitazenes have also been reported in other counterfeit pills, like fake diazepam (brand name Valium) and fake alprazolam (brand name Xanax). Drugs in other forms like powders could also contain nitazenes.





CATCH22  
WEST MERCIA  
**STEPS**



# DO YOU KNOW A YOUNG PERSON WHO MIGHT NEED EXTRA SUPPORT?

Let's work together to keep them safe. The Catch22 STEPS service offers tailored support for young people aged 8-18 at risk of or experiencing exploitation. Visit our website to learn more and refer a young person to our service.



*Support Through Exploitation and Prevention Service.*

**FOR GENERAL ENQUIRIES:**

[steps@catch-22.org.uk](mailto:steps@catch-22.org.uk)

Click for  
Website



**Catch22, STEPS is an integrated CCE/CSE service for children and young people aged 8-18, offering tailored support to young people at risk of criminal and sexual exploitation. Support is based on the Trauma Recovery Model and delivered using a child-centred approach. The service comprises three key elements, each designed to build resilience, promote safety, and reduce vulnerability. All support is tailored to the individual's needs.**

### **1. Child Criminal Exploitation (CCE) Support**

This is focused on early intervention for young people at risk of being criminally exploited. Support is delivered through weekly one-to-one sessions covering topics such as safety, healthy relationships, exploitation awareness, and anti-social behaviour. Young people are also supported in accessing sustainable, diversionary activities, such as sports, arts, or other interests, to build confidence and connection, give them a sense of community, and a structured, positive use of time.

This support is for young people who don't currently access any Social Care services or support.

### **2. Child Sexual Exploitation (CSE) Support**

This is for young people at any level of risk of child sexual exploitation, be that early intervention, live or historic abuse or exploitation. Support consists of one-to-one sessions covering topics such as healthy relationships, safety networks, trauma, emotional literacy, and unmet needs. (In Telford, the CATE team will continue to manage high-risk and historic cases). We also support accessing sustainable diversionary activities.

### **3. Awareness and Prevention**

The Awareness and Prevention service is a holistic offer for education settings, incorporating policy review and training for staff, workshops for parents and awareness raising and targeted education programmes for children and young people. The service is committed to supporting education settings in generating cultural change in its approaches to tackling CCE and CSE, integrating themes of safety, decision making, consent and healthy relationships.

Click to refer for Young Person 1:1 Support



Click to refer for professional  
awareness and prevention





# National Referral Mechanism (NRM) Devolved Decision Making Pilot update

The NRM Pilot continues to receive a steady stream of referrals from professionals throughout Shropshire, and we are getting close to processing as many NRM referrals since inception (September 2025) as Shropshire completed in total in 2024 (18 referrals) so far.

As we increase awareness through embed processes, awareness and training, please ensure you continue to complete CE Risk Assessments as usual. You may want to consider if your safeguarding role constitutes you as a 'First Responder'.

Currently, the NRM Pilot only processes referrals for children (under 18 years old). However adults can have NRMs too. You may need to understand what your duties are under DtN (Duty to Notify).

**Please use the following links to learn more:**

- [To check if your role as classed as a 'First Responder'](#)
- [To understand your statutory responsibilities as a 'First Responder'](#)
- [To understand when a referral might be needed](#)
- [How 'Duty To Notify' works.](#)
- [Please use this link to submit a NRM](#)



# Further Learning & Training Offers

West Mercia Police are offering a free online session for parents and carers to help them better understand the risks of exploitation and online safety for children of all ages. Please help us promote this important opportunity to the families you work with.

## Exploitation & Online Safety Session for Parents and Carers

**Hosted by:** West Mercia Police

**Format:** Free online event

**Who it's for:** Parents, carers, and guardians of children and young people. This accessible and informative session will help parents and carers build confidence in recognising risks and supporting their children to stay safe. It will cover:

- **Spotting the signs of exploitation** and knowing when something isn't right
- **How to keep children safe online**, including practical steps families can take
- **The influence of online personalities and influencers** on children's thinking, behaviour, and self image
- **Useful, easy to-follow safety tips** that parents and carers can use straight away

[Online safety \(Child exploitation\) session for parents and guardians Tickets, Fri 6 Mar 2026 at 10:00 | Eventbrite](#)

## For internal Shropshire Council staff (book via Leap):

-> [Young Person's Substance Misuse, AI, Addiction and Exploitation](#)

## For external partners (book via Joint Training website):

-> [Young Person's Substance Misuse, AI, Addiction and Exploitation](#)

-> [Online Safety and Generative AI | Shropshire Learning Gateway](#)

## Partner Exploitation Training :

-> [Exploitation and vulnerability training | West Mercia Police](#)

## TREES Website

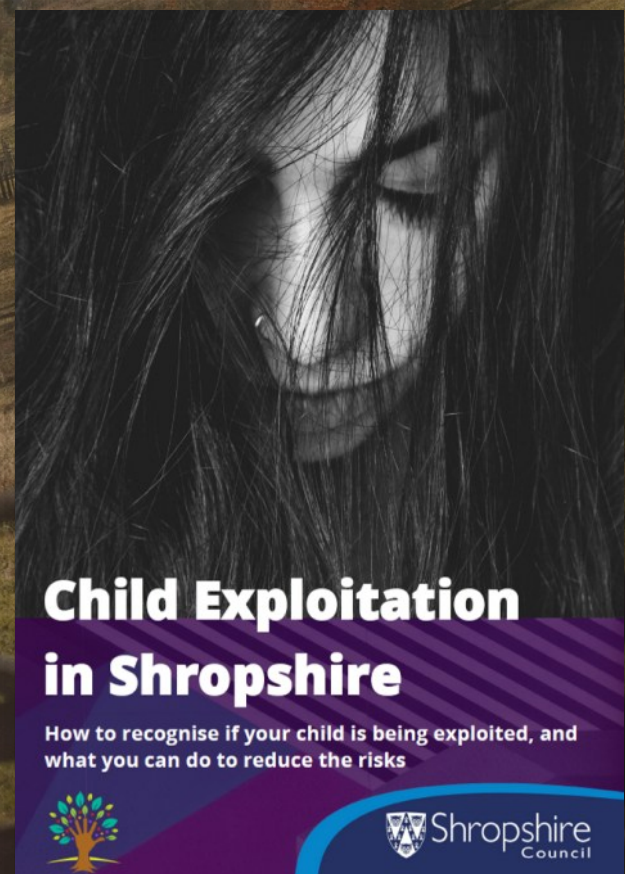
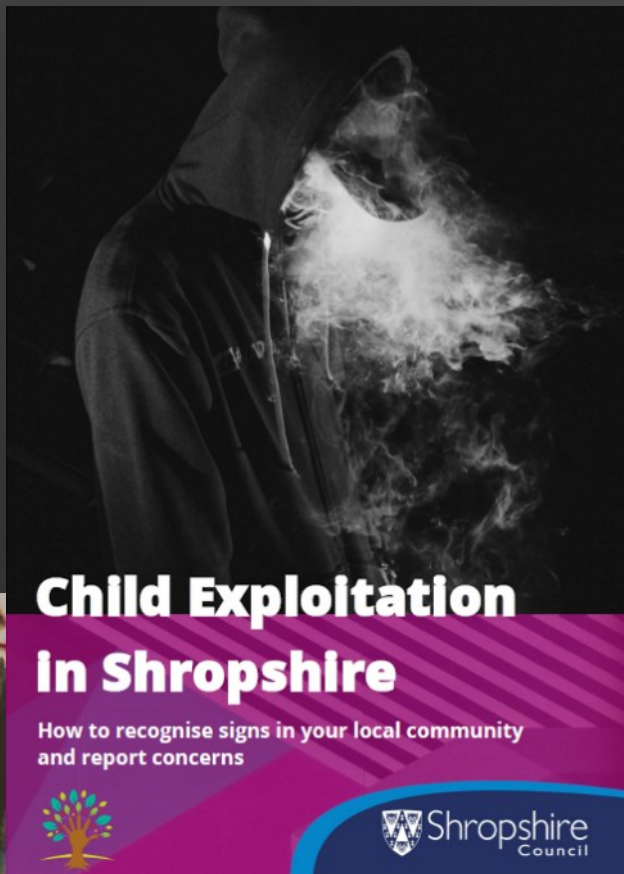
<https://next.shropshire.gov.uk/childrens-social-care-and-health/child-exploitation/>

## TREES Email

[childexploitation@shropshire.gov.uk](mailto:childexploitation@shropshire.gov.uk)

# Exploitation Leaflets

TREES have leaflets for anyone affected by exploitation—please visit ;  
[How can we support children who might be being exploited? | Shropshire Council](#)



# Child Exploitation Consultation Sessions

---

## We are here to support you :)

Do you have a particular young person who you would like to discuss in more depth? If so, we are offering weekly consultations every Tuesday 2pm – 4pm.

The following professionals will be on hand to offer advice and support regarding all CCE, CSE and substance misuse queries:

- Charlotte Bell, Senior Social Worker, TREES Team
  - George Davies, NRM Coordinator TREES Team
  - Vicky Rodgers, Education Access Service
  - Ruth Hemmings, CE Lead Practitioner With You
- + Any professional, service or provision can be invited for consultation

**To book a 30 minute timeslot, please use the self-booking service at: <https://shorturl.at/P6DRh>**



**Shropshire**  
Council

# Useful Links

---

## Child Exploitation Risk Assessment Tool

To be completed if you have concerns about a particular young person (parental consent required):

[CE Risk Assessment](#)

## Reporting Intelligence

Professionals are welcome to email non-urgent information directly to the police CE Team at:

[CETeamShropshire@westmercia.police.uk](mailto:CETeamShropshire@westmercia.police.uk)

## TREES Website

Full of information, advice and guidance—the website also sets out what we are doing to prevent child exploitation;

[Child exploitation | Shropshire Council](#)

## Child Exploitation Leaflets & Child Exploitation Directory

All leaflets related to child exploitation can be found on our website, as well as the CE Directory which outlines the support available to children and young people in Shropshire, including the parents, families and carers who support them;

[How can we support children who might be being exploited? | Shropshire Council](#)

## Smarter Screening Tool

To be completed if you have concerns regarding a young person's use of substances:

<https://shropshire.gov.uk/media/21573/with-you-smarter-screening-tool-vnov21.doc>

## Partner Organisations

Shropshire Safeguarding Community Partnership - [www.safeguardingshropshireschildren.org.uk](http://www.safeguardingshropshireschildren.org.uk)

Early Help - [www.shropshire.gov.uk/early-help](http://www.shropshire.gov.uk/early-help)

West Mercia Police - [www.westmercia.police.uk](http://www.westmercia.police.uk)

West Mercia Youth Justice Service - [www.westmerciayouthjustice.org.uk](http://www.westmerciayouthjustice.org.uk)

With You - [www.wearewithyou.org.uk/services/shropshire](http://www.wearewithyou.org.uk/services/shropshire)

Catch 22 - [STEPS \(Support Through Exploitation and Prevention Service\) | Catch22](#)

Purple Leaf - [www.purpleleaf.org.uk](http://www.purpleleaf.org.uk)

Brightstar Boxing - [www.brightstarboxing.co.uk](http://www.brightstarboxing.co.uk)

Steer Clear - [Steer Clear | The Children's Society](#)

NWG - [www.nwgnetwork.org](http://www.nwgnetwork.org)

For support or advice, or to be added to the mailing list for this newsletter, please contact

[childexploitation@shropshire.gov.uk](mailto:childexploitation@shropshire.gov.uk)