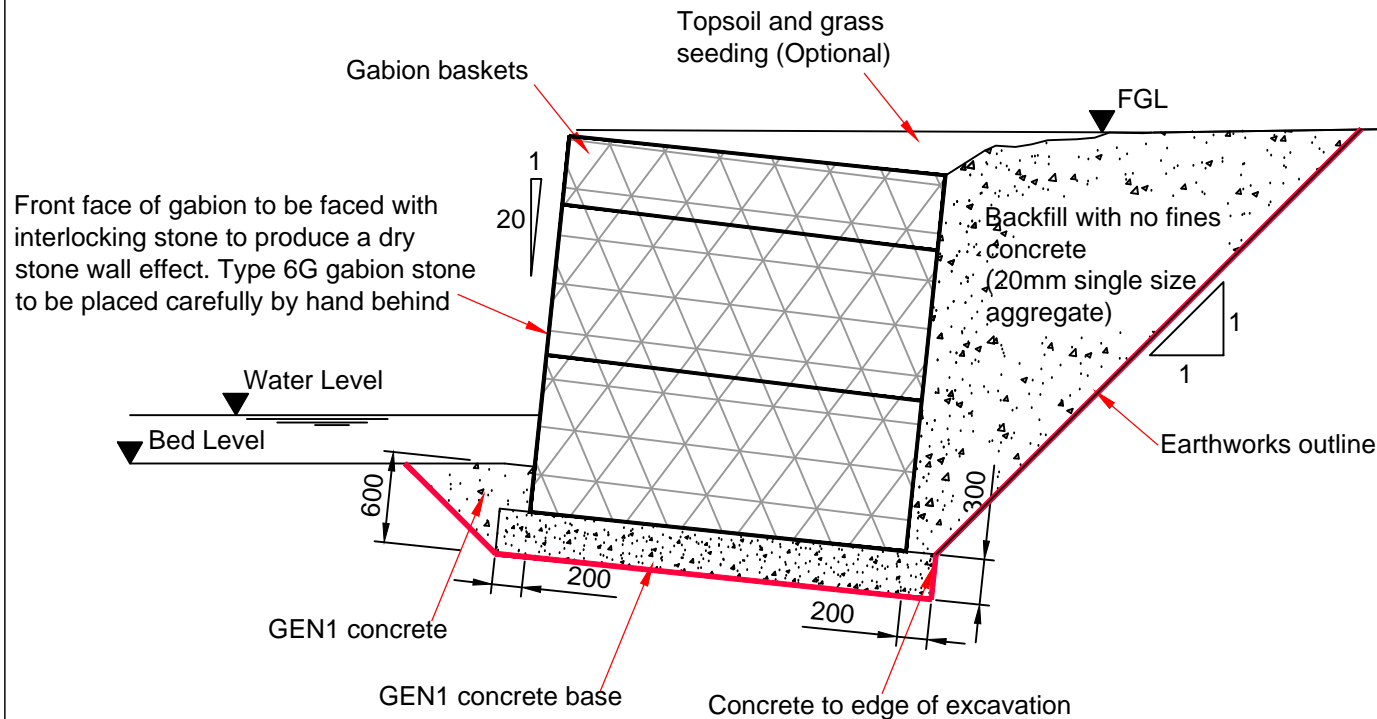


Notes

1. Gabion baskets shall be assembled in accordance with the manufacturers instructions and sufficiently filled with 6G material to minimised distortion during construction. The exposed faces of the gabions shall be laid to achieve a 'dry stone' wall effect.
2. Gabion baskets shall be maintained square with vertical sides during filling. Internal tie wires shall be inserted and tensioned in accordance with the manufacturers instructions.
3. 6G stone shall comply with Appendix 6/10.
4. The gabion mesh shall be mesh manufactured from wire complying with BS1052 having a minimum core diameter of 5.0mm. All wire shall be galvanized in compliance with BS EN 10244-2.
5. Baskets to be 'welded-mesh' type or 'woven-mesh' type. Max mesh dimensions to be 75mm x 75mm.
6. Mechanical equipment may only be used for filling gabion units provided that the results are equivalent to filling by hand.



Standard Detail Gabion Baskets

Version	Amendment	Date
Checked By: TRE	Drawing Number: SD-600-01	Version: -
Date Issued: Oct 16		