



Summer term Newsletter



Update from Shropshire Virtual School

I hope you had a good (and much needed) Easter break.

Thank you to everyone for all the support you continue to give our children and young people, especially given all the covid pressures.

We had a great event with Shropshire Music School at February half term where our children tried out instruments and gave a performance in the afternoon 😊
This photo is of the ukelele group!

Here are some updates for you and we wish you a good Summer term!





Shropshire Childrens Services received a judgement as overall GOOD in the recent OFSTED ILACS Inspection

You helped to make this happen through all the support you give to our children, whether Looked After, Previously Looked After or with a Social Worker! Thank you for working us to achieve this result.

28. The virtual school and partners work well together to ensure that children in care receive the educational support they need to succeed. Individual children are making strong academic progress. Older children are being helped and supported into higher education, training and employment opportunities, including the council's own apprenticeship scheme, as appropriate to their needs.

[Shropshire Council delighted to be judged as overall 'Good' for its children's services following Ofsted inspection - Shropshire Council Newsroom](#)

A warm welcome to Amy Foulger and Beth Francis!

Amy (left) is our new Education Advice & Support Officer and Beth (right) is our first ever Participation Support Officer. They have both started at the beginning of the summer term.

Amy will be your first point of contact for advice and information for Previously Looked After Children and Children with a Social Worker.

Please do get in touch at Amy.foulger@shropshire.gov.uk

Beth will be helping with our ever-growing number of events and activities for our children and young people. These will be advertised on our website soon. You can get in touch with Beth at Beth.francis@shropshire.gov.uk

[Promoting the education of children with a social worker \(publishing.service.gov.uk\)](https://publishing.service.gov.uk) ; [Promoting the education of looked-after children and previously looked-after children \(publishing.service.gov.uk\)](https://publishing.service.gov.uk)



Our aim is for every one of our young people to have a good quality PEP.



You helped us to achieve a huge step towards this!

Only 58% of our children's PEPs were good quality in December, but together we have changed that to 80% by the end of Spring term!

The PEP is so important for raising aspirations and building life chances.

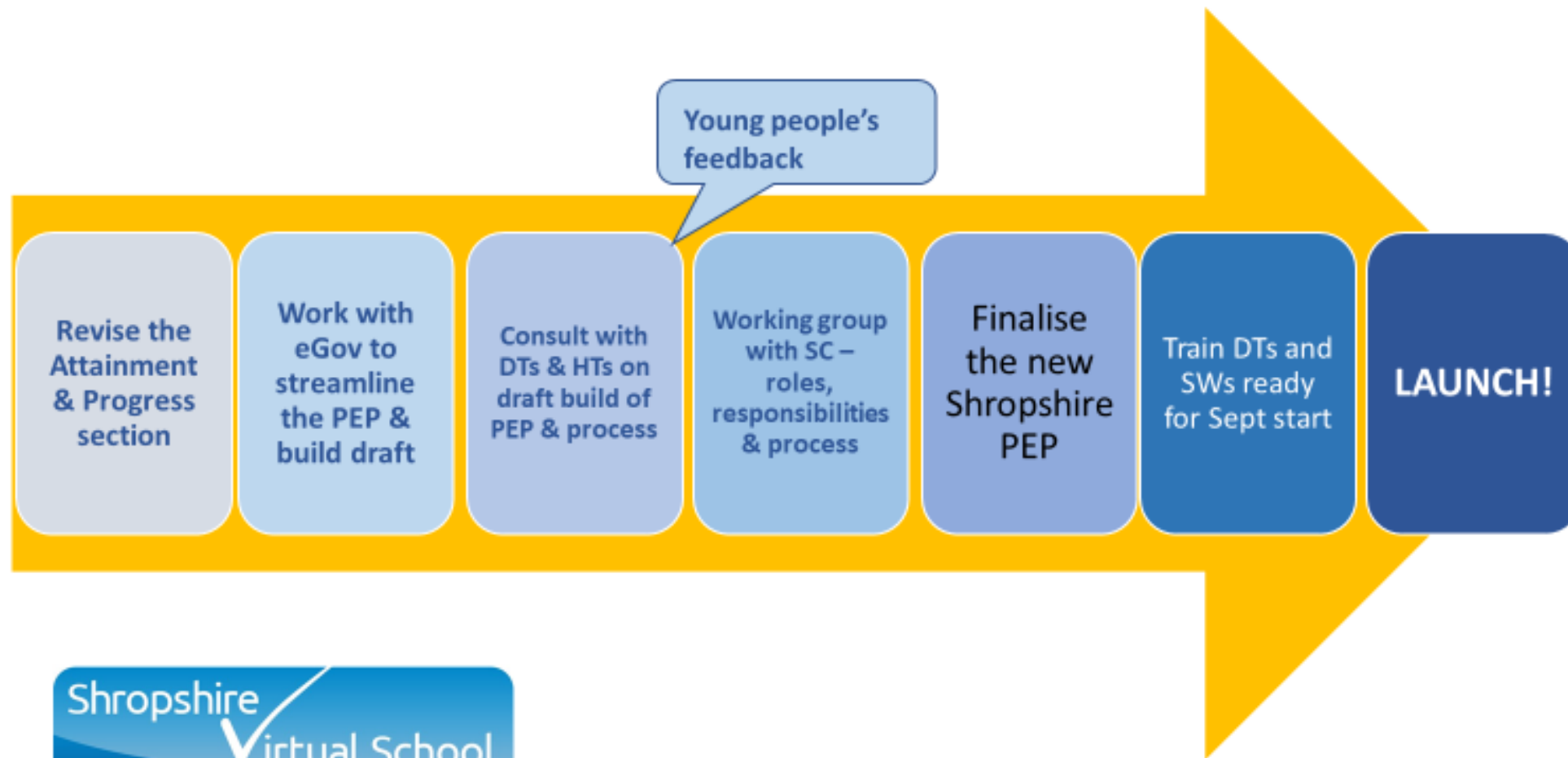
[Promoting the education of looked-after children and previously looked-after children \(publishing.service.gov.uk\)](https://publishing.service.gov.uk)

At the recent DT Network, we shared the journey we are on together. Thank you to those who have volunteered to be part of the trial of our new PEP, we will be in touch once the build is on the test site! The new Post 16 PEP is also in draft, so we are working with post 16 providers to support its development.

In the meantime, the VS team is working behind the scenes with our LA Social Care Partners to review how we work together jointly with roles, responsibilities and quality assurance.

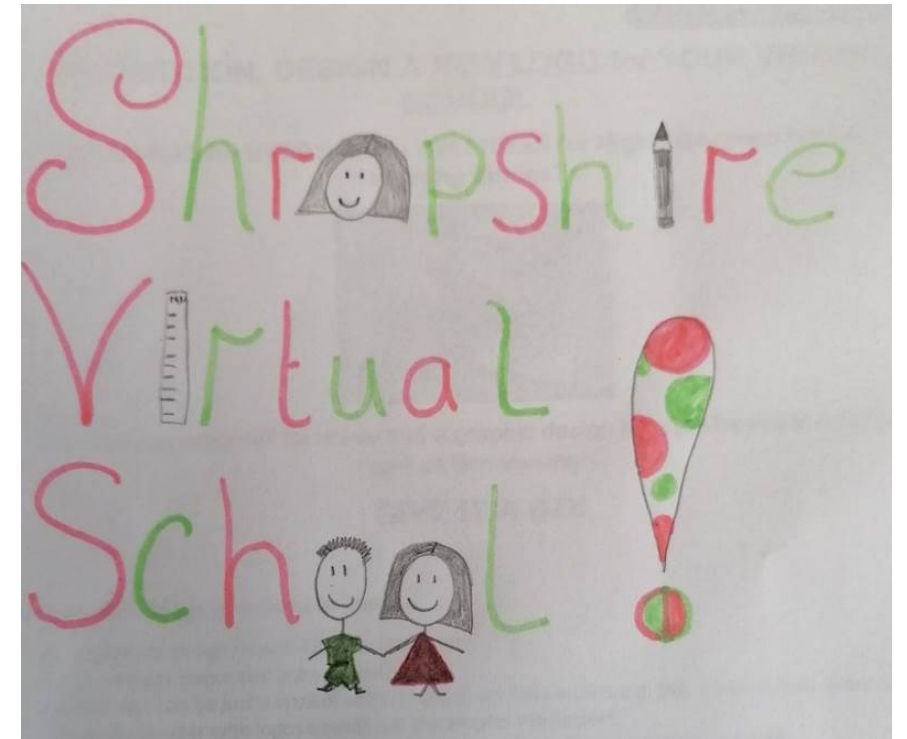
See our plan.....

Developing the New Shropshire PEP



Shropshire VS Logo Competition

- During March all our children who entered were written to and thanked for their designs, they also received a voucher for taking part
- The 3 winners will be working with a local artist next week to blend their design into the final one. Well done to these young people!



Attendance Update

Our pupils with attendance of over 95% is up 1.2% to 62% so this is good progress 😊
However our PAF is at 21%, most of it from illness and covid so we are hoping that this improves this term.

Many thanks to DTs and Attendance Officers in schools for inputting attendance in the ePEP attendance module weekly and some even daily! It is important we pursue any missing data to fulfil our duties on attendance for looked-after children and we do appreciate your prompt responses particularly during the pandemic.

To help...

- Change any N codes (no reason yet provided) as appropriate when school receive a reason for the absence
- *Actual* attendance is input for any pupil who is dual registered eg attending TMBSS or other Alternative Provision. D is accurate for a school's register, but we need to have actual attendance for each session.
- If a pupil is on an agreed plan such as reduced timetable or flexible learning plan please help us by ensuring the VS, parent (& SEN if relevant) have consented, plus the paperwork is with us. Remember to keep in touch with the pupil while on a RTT for safeguarding.

Let us know if there is a change in personnel in school so we can add a new Attendance Officer to input attendance promptly – and if there are any questions re coding or difficulties accessing the module please contact anne.c.williams@shropshire.gov.uk

What can you expect from The Adopter Hub?

On The Hub you'll find information and support on a huge range of topics. We work closely with our community to ensure that we are covering the issues that are important to you.



eLearning courses

Learn about key topics such as attachment and behaviour through short, accessible modules.



Online forums

Talk to other adopters or special guardians, or post a question to the 'Ask the Team' forum to reach one of our on-hand experts.



Adopter webchat

Chat with our trained adopter peer support provide live one-to-one support.



Resources on key topics



Live webinars



AC Education Training

Shropshire Virtual School have a number of AC Education online training courses that are available free to schools, please see the [AC Schools Education flyer](#) for more information – and if you would like to request access to any of the courses please email us at Virtualschool@shropshire.gov.uk

AC Education have also launched a [YouTube Channel](#) with some of their trainers. These provide free webinars to support parents, carers and school staff during this time.



FREE RESOURCES and TRAINING ON US!

Email us virtualschool@shrophire.gov.uk for access on range of subjects relating to supporting CLA, PLAC and Children with a Social Worker, these can be used at staff meetings or with individual staff in your school

NEW - Support from Dr Eleanor Tomlinson with **TIME FOR YOU**

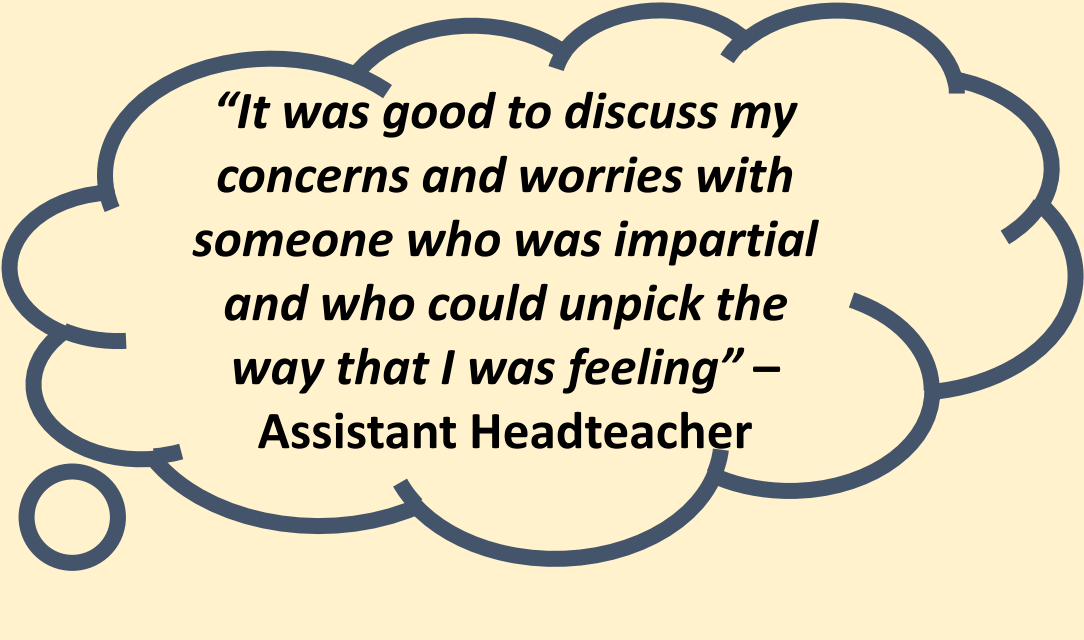
Time for You is for school staff who would like a reflective space to have a conversation about supporting a young person with their education. This is available re young people **in care to Shropshire** or were **Previously Looked After** and they attend your school.

Time is able to be booked with **Dr. Eleanor Tomlinson** (CPsychol., D.Ed.Psych., BSc Hons Chartered Educational and Child Psychologist) and the conversation is led by you.

It is objective, safe and only the child's first name is used for Previously Looked After young people. The safe space enables you to discuss your authentic feelings, thoughts and concerns around supporting this young person and gives time to considering possible ways of moving forward with them.

The request form and more information is on our website under "Resources, Training and Links")

[Resources, training and useful links | Shropshire Council](#)



"It was good to discuss my concerns and worries with someone who was impartial and who could unpick the way that I was feeling" – Assistant Headteacher

We will be planning a
Celebration event for our
class of 2021-22!

Watch out for information
on how to nominate your
young people...



PARTICIPATION at SVS



Our young people enjoyed a Band Build event in the Easter break... after 3 days practice they performed their own song plus covers to an audience on Friday and they were fantastic!

Here are two members of the SVS team enjoying themselves in the drumming workshop too!

ACTIVITIES COMING UP...

SPORTS DAYS

STREET DANCE

BACK to BASICS – OUTDOOR PSHE

BAND BUILD

Email us for more information at
virtualschool@shropshire.gov.uk

Using PP+ together...

Our new Shropshire VS Pupil Premium + Support Map

SHROPSHIRE VIRTUAL SCHOOL PUPIL PREMIUM + SUPPORT MAP
(young people in care)
2021-22

Intervention/Resource	Criteria	Provider	Timings	Impact Measure
Tuition	Referrals are needs based & bespoke via VS Link	Targeted Provision, TLC Live, Equal Education & other providers	Bespoke as needed	Reports, attainment & progress measures
Educational Psychology	Referrals are needs based & bespoke via VS Link	Shropshire EP Service	Bespoke as needed	Report supports inclusion, access or other measure in line with assessment type
Letterbox (Literacy & Maths) resources	Year R to 6 children	Letterbox Letterbox Club Duck Trust	May to September parents; also christmas parcel	Enjoyment & engagement, supporting attainment & progress
'Welcome' educational packs for students who are Unaccompanied Asylum Seeking young People	New into care UASYP*	Shropshire Virtual School team	Bespoke as needed	Feedback from the students
Assessment & tuition for students who are UASYP	Bespoke referral for UASYP (statutory school years)	EAL for learning www.learnengalshfordall.co.uk	Bespoke as needed	Assessment / Tuition reports
Nurture 3 day Theory & Practice	Schools request a place by sending signed Agreement to SVS for consideration	Nurture UK	Roll out 1: 23 rd & 24 th March, 28 th April Roll out 2: 25 th & 26 th May, 16 th June Roll out 3: 5 th & 6 th Oct, 10 th Nov	Schools complete accreditation, open nurture group and impact data is collected
'Time For You' reflection / coaching sessions with our independent Educational Psychologist	CLA - Request time via VS Link PLAC - Request time via Lindsay.Armstrong@shropshire.gov.uk	Next Steps Psychology Ltd	See our website for dates & times	Evaluation of feedback
Emotion Coaching	Schools can request a place www.shropshire.gov.uk	Next Steps Psychology Ltd	See our website	Evaluations from training
Attachment/Trauma training	Schools request a place www.shropshire.gov.uk	Shropshire EP Service	Bespoke as needed	Evaluations from training
Mentoring & Holiday Club activities	Bespoke referral via VS Link	Embrace (Embrace Linkage Group)	Bespoke as needed	Reports include engagement & enjoyment
Mentoring	Referral via VS Link	SmashLife Home - Smash Life Impaired Talents Mentoring Transition Connections www.smashlife.com	Bespoke as needed	Reports include engagement & enjoyment
Aspire programme - Aspirations, transition and progression	Key Stage 4 students. Referral via VS Link	Aspire / Seeds of Change Meet the Team Seeds of Change	Bespoke as needed	Qualitative and quantitative impact measures in reports
Participation eg cultural and sporting activities	Appropriate age group for individual events.	Various - also see Arts4All Arts4All Arts4All	After school / school holidays. See our website.	Attendance, Engagement & Enjoyment
Music / Instrument lessons	All year 4 children have this offer; for young person in age groups year R-11 make a request to your VS Link	Shropshire Music Service www.shropshiremusic.org.uk	Bespoke as needed	Reports include attendance, engagement & enjoyment
Band Build (Music)	Key Stage 4 students - referral via VS Link	The Hive www.thehive.org.uk	Bespoke as needed	Reports include impact measures on attendance, engagement & enjoyment
Online advice, training and information for parents/carers	Request via www.shropshire.gov.uk	The Adopter Hub www.theadopterhub.org.uk	Bespoke as needed	Engagement and feedback
Online training for practitioners (short courses across multiple topics)	Request via www.shropshire.gov.uk	AC Education www.aceducation.co.uk	See our website	Evaluations
Training for Foster Carers (multiple topics eg SEN, Aspirations, PEPs, Emotion Coaching)	Foster carers apply via Fostering teams	Shropshire VS and Fostering		

What can we offer you 'at a glance' when you need it?

This has come out to you on email but will also be available on our website very soon with our new PP+ Policy.

The amount coming from us to you per child will increase to £410 each term for this financial year.

Events for you...

SUMMER DT NETWORK and UPDATE 29th
June

DT NEW TO POST 14th June

GOVERNOR UPDATE 18th May

ATTACHMENT Level 1 10th May 9.30, Level
2 17th May, Level 3 14th June

<https://cpd.ucshrewsbury.ac.uk/catalogue/>

**Watch this space for training on EMOTION
COACHING for Schools in September**

Plus - we are delivering training to Foster
Carers on Emotion Coaching, SEN, PEPs
and Aspirations towards Post 16



The Shropshire Virtual School Team



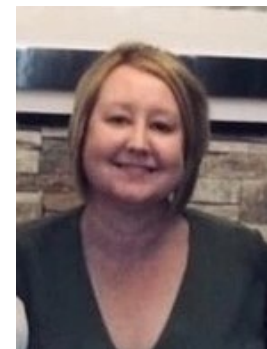
Jo Kelly
Virtual School Head Teacher



Anne Williams
Specialist Education Access Officer



Lorraine Griffiths
CIAG PA (Post 16)



Paula Edwards
Administrator



Lindsay Armstrong
Asst Head



Georgia Smith
Specialist Teacher



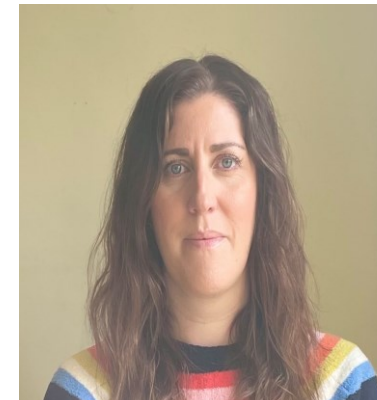
Lisa Peters
Specialist Teacher



James Waller-Davies
Specialist Teacher



Adriana Coupe
Specialist Teacher



Amy Foulger
Education Advice & Support Officer



Beth Francis
Participation

Have a great summer term!

Find out more on the Shropshire Virtual School Website

<https://shropshire.gov.uk/looked-after-children/shropshire-virtual-school/>

And follow us on Twitter @ShropVirtualSch

- You can get in touch with us at:
- Jo.kelly@shropshire.gov.uk ; Lindsay.Armstrong@shropshire.gov.uk
- Anne.c.williams@shropshire.gov.uk ; Lorraine.Griffiths@shropshire.gov.uk
- Paula.edwards@shropshire.gov.uk ; Georgia.smith@shropshire.gov.uk
- Lisa.Peters@shropshire.gov.uk ; James.Waller-Davies@shropshire.gov.uk
- Adriana.Coupe@shropshire.gov.uk ; Beth.Francis@shropshire.gov.uk;
- Amy.Foulger@shropshire.gov.uk or virtualschool@shropshire.gov.uk

