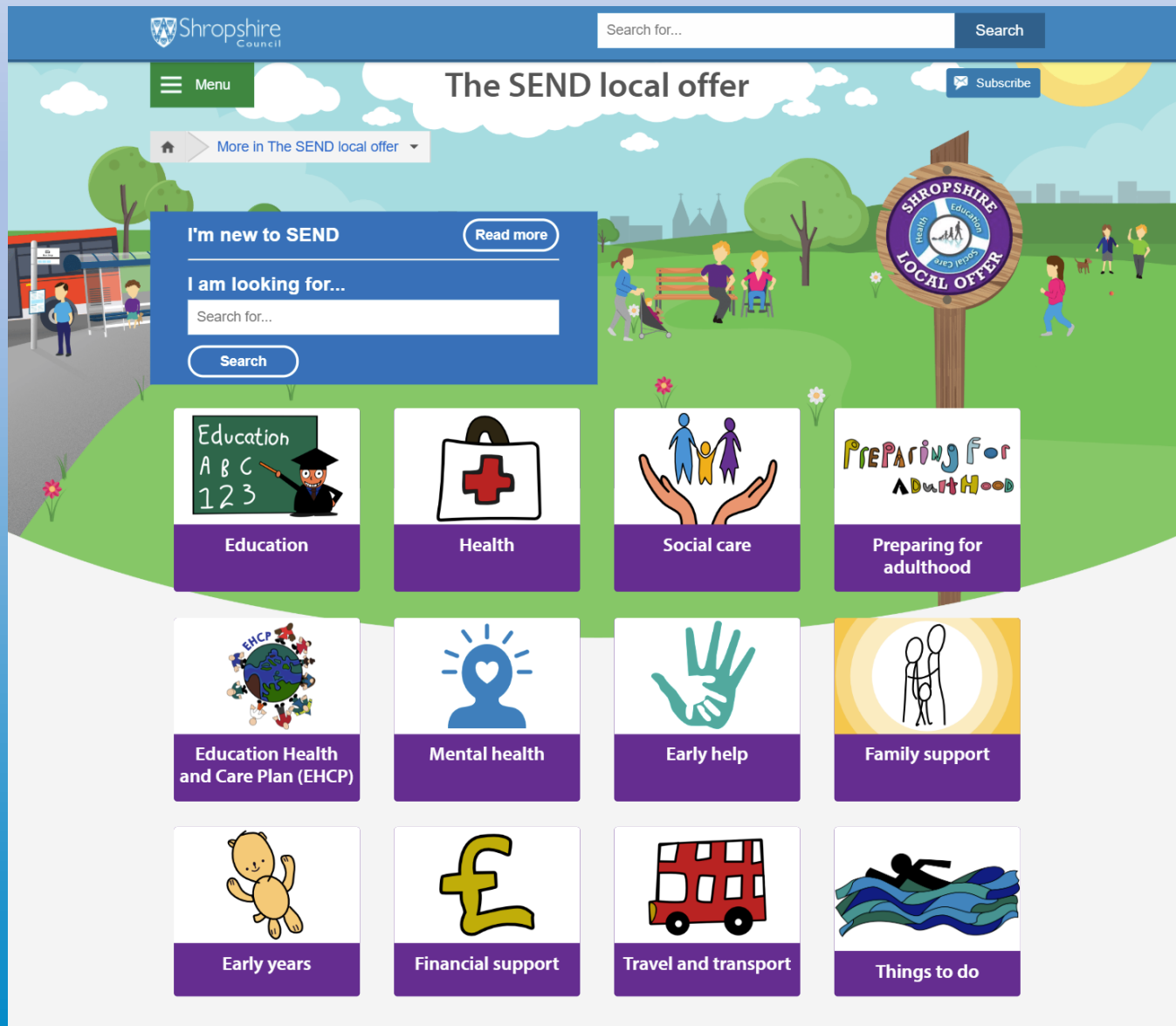




The SEND local offer

What is **Shropshire's SEND Local Offer**
and how can it help children, young
people and families?

www.shropshire.gov.uk/the-send-local-offer/



The **SEND Local Offer** is a single place for information, services and support for children and young people with special education needs and / or disabilities, their families and the practitioners who support them.

www.shropshire.gov.uk/the-send-local-offer/



Education – What's on the Local Offer?



Think your child may have Special educational needs? The Local Offer has information about how the SEN Team and school can support your child.

Find out about the **Education services in Shropshire** that can support you and your family.

Find out how to request an **EHCP** (Education, health and care plan) assessment, get information about the annual review process, and quick reference FAQs.

Nurseries, schools and colleges

Local further education options, specialist provision, and a list of schools.

Shropshire's local further education providers

Further education colleges and training providers in Shropshire.

Details on how to **resolve disagreements** relating to SEND, including information on mediation and the SENDIST Special Educational Needs and Disability Tribunal.

www.shropshire.gov.uk/the-send-local-offer/



Health – What's on the Local Offer?



The Local Offer Health page outlines the health services available to children and young adults with SEND, including those without EHCPs. This includes:

Children's Continuing Care

GPs & Dentistry SEND Services

Wheelchair and Posture Service

Young People's Community Eating Disorders Service

Child Development Centres

Children's Hospice Service

Specialist Services

Children's Community Physiotherapy

Psychology

Occupational Therapy services

Public Health & Children's Community Nursing Services

Speech and Language Therapy (SALT)

Annual Health Checks

Vaccinations

www.shropshire.gov.uk/the-send-local-offer/



Social Care – What's on the Local Offer?



Disabled Children's Team - Helping children and young people with permanent and severe disabilities.

Looked-after children - Those receiving care because of a court order or by voluntary agreement with parents. Find out more about the specialist help available from the Shropshire Virtual School.

Occupational Therapy (OT) Team - Find out about the support available via Occupational Therapist assessments, advice, and support in the home through the provision of equipment and/or adaptations to ensure safety, maximise mobility and promote independence.

Early help – Find out about the Early help support available to support a child, young person or their family as soon as a problem starts.

Transitioning from children's to adult social care - The steps you need to take for a smooth transition into adult social care.

Personal budgets and direct payments – Find out how a personal budget can allow you to buy and manage services yourself.

Short Breaks - Opportunities for disabled children and young people to spend time away from primary carers.

www.shropshire.gov.uk/the-send-local-offer/



Preparing for Adulthood What's on the Local Offer?



Education - Want to continue your education after school? Find out about the options available to young people with SEND to continue their education after school and beyond.

Careers and Employment - Lots of helpful advice and guidance available for young people with SEND, to help them to make the step into the world of employment.

Social Care - Information about the process of transitioning into adult social care.

Young people preparing to make their own decisions - The rights of young people aged 16 plus to make decisions for themselves.

Housing and independent living - Find out about your housing options and supported living.

Personal stories - Find out about the huge range of experiences of young people with SEND in Shropshire as they become adults.

Financial support - Find out more about different financial support available to eligible young people.

www.shropshire.gov.uk/the-send-local-offer/



EHCPs (Education, Health & Care Plans) What's on the Local Offer?



What is an EHCP? Find out what an EHCP is and who is eligible to request one.

How to request an assessment for an EHCP - Find out how to apply for an EHCP from Shropshire Council.

Annual reviews - What is an EHCP Annual Review, who will be the chair, who will be invited and what will happen at the meeting?

EHCP FAQs - All the answers to frequently asked questions about EHCPs on one page.

Personal Budgets - What is a personal budget and who can request one?

Resolving disagreements - How we resolve disagreements relating to SEND, including information on mediation and SENDIST (Special Educational Needs and Disability Tribunal).

www.shropshire.gov.uk/the-send-local-offer/



Mental Health - What's on the Local Offer?



Early help and support - What to do if you're concerned that a child or young person is showing signs of emotional or mental ill health.

BEAM - Find out more about what BEAM is, who can access it and where to find the drop in sessions in Shropshire.

Diagnosis pathways – who can make a diagnosis and how to get a referral to a specialist mental health practitioner (SPMHP).

Treatment pathways - such as psychological therapies, family therapy, counselling, group work and pharmaceutical support.

Crisis Care Management – What is a crisis, when might one occur and how needs will be assessed on a case-by-case basis.

www.shropshire.gov.uk/the-send-local-offer/



Early Help

What's on the Local Offer?



What is Early Help - Find out more about what Early Help is, how you can access support and how it can prevent issues from getting worse.

Stages of Early Help Provision - Find out about the various stages of Early Help provision.

Early Help Family Support Workers - What is the role of the family support worker and how you can get help from one.

Schools - How schools in Shropshire fulfil their SEND commitments.

Public Health Nursing Service - What does this service offer and how you can access it.

The Parenting Team - What this team is responsible for and how you can use their services.

Shropshire Young Carers Service - Support available in Shropshire for young carers aged 5 to 18.

Shropshire Domestic Abuse Service - Information on this specialist service and the support packages they offer.

www.shropshire.gov.uk/the-send-local-offer/



Family Support – What's on the Local Offer?



Information, Advice and Support Service (IASS) -
Find out more information about IASS, what they offer and how you can contact them.

Shropshire Parent and Carer Council (PACC) -
Information about PACC and how to contact them.

Citizens Advice - An introduction to the Citizen's Advice Service and the assistance it offers families.

Autism West Midlands (AWM) - Find out more about different financial support available to eligible young people

Support to keep my child safe online - Some useful links to resources that promote online safety.

Financial support - Find out more about different financial support available to eligible young people

SEND Support Groups - Local parent carer run support groups to chat and share experiences.

Family Information Directory - Find out lots of services / organisations that offer support.

www.shropshire.gov.uk/the-send-local-offer/



Early Years – What's on the Local Offer?



Early Years Provision – Early years provision in Shropshire is provided by both maintained nurseries and private, voluntary and independent early years provision including childminders.

Funded Nursery Entitlement – All children are entitled to 15 hours free nursery education from the term after their third birthday. Find out more about the eligibility criteria for two year olds.

Concerned about your child's development - Find out more about who to talk to and what you can do to check developmental milestones.

The Graduated Approach – What are the four stages of this process and what a setting should do at each stage.

SEN Support for 0 – 6 year olds – Links to the support available.

Preferred Providers – Discover what a preferred provider is and how you can request a copy of the list.

Extended childcare – More information about the entitlement for 30 hours free childcare.

www.shropshire.gov.uk/the-send-local-offer/



Financial support – What's on the Local Offer?



Benefits

Disability Living Allowance (DLA)

Personal Independence Payments (PIP)

Family Fund

Personal Budgets

SEN Transport Support

Carer's Allowance

Access to Work Fund

www.shropshire.gov.uk/the-send-local-offer/



Travel and Transport – What's on the Local Offer?



Nursery under 5s – Travel assistance available for children under 5 who have an EHCP or SEN.

Support for 5-16 year olds – Support available for children aged 5-16 with an EHCP or SEN.

Post 16 (16-19 year olds) - Find out more about travel assistance available to students aged 16-19 with an EHCP or SEN.

Post 19 (19 year olds+) - Find out more about travel assistance available to students aged 19-25 with an EHCP or SEN.

Apply – Information about how to apply for transport assistance for children with an EHCP or SEN.

Appeals – Information about how to appeal for transport assistance for children with an EHCP or SEN.

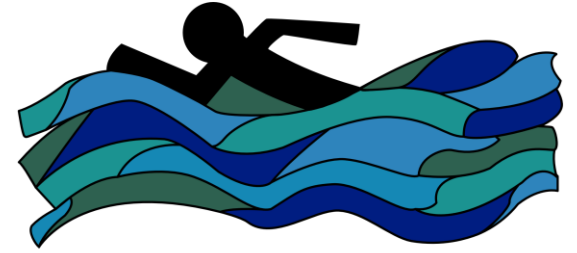
Top Tips – Tips and helpful things for parent carers to know when applying for transport.

Safeguarding - Explains the duty of care to protect children and vulnerable adults and information on what to do if you think anyone is being harmed or is at risk.

www.shropshire.gov.uk/the-send-local-offer/



Things to do – What's on the Local Offer?



Shropshire Family Information Service – The SEND Local Offer section on the Directory has the following categories: Young people, leisure, activities, support groups etc. You will find lots of activities, clubs and fun things to do including:

All In Short Breaks

SEND Support Groups

SEND Coffee Mornings

SEND Disability Drop In Sessions

Kids and Holiday Clubs

Youth clubs / groups

Sports / Physical activity sessions

Sing and Sign

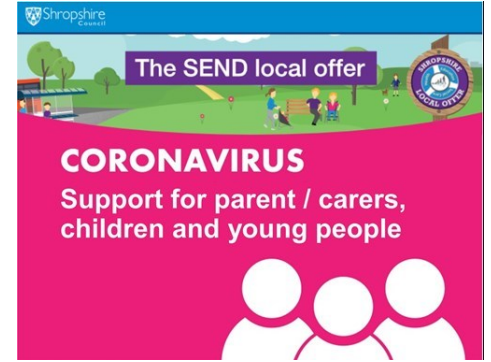
SEND swimming clubs

Dance and movement classes

www.shropshire.gov.uk/the-send-local-offer/



Coronavirus – What's on the Local Offer?



Guidance and documents - Find useful guidance and documents from the DfE / NHS relating to coronavirus.

Resources and support - A range of useful resources to offer support during the coronavirus pandemic

- Explaining coronavirus
- Information on the vaccine
- Mental health support
- Physical health and mobility
- Support for parent carer and families
- Bereavement support

Easy-read materials - A collection of easy read materials to use when talking to children and young people relating to coronavirus including:

Educating pupils at home - During potential lockdown periods or episodes of shielding you can find a list of useful resources to use whilst home educating.

Newsletter – Aims to give useful updates and information to help support parent carers of children and young people with special educational needs and disabilities.

www.shropshire.gov.uk/the-send-local-offer/



Find out how Shropshire's SEND
Local Offer can help you at:

[www.shropshire.gov.uk/the-send-
local-offer/](http://www.shropshire.gov.uk/the-send-local-offer/)

local.offer@shropshire.gov.uk

0345 678 9063

www.shropshire.gov.uk/the-send-local-offer/