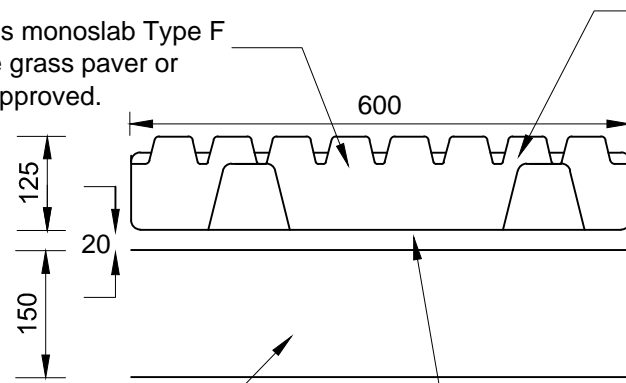


Marshalls monoslab Type F concrete grass paver or similar approved.



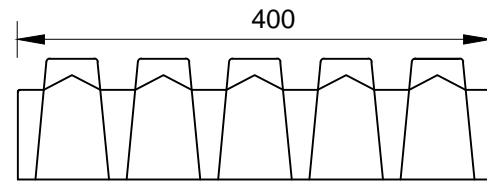
After bedding concrete grass pavers to be filled with topsoil to 20mm. below the top surface.

Type 1 sub-base.

Clean sharp sand complying with BS.882 grading C or M 20mm. \pm 5mm. thick.

Side Elevation.

Grass Pavers (Concrete) (Marshalls)

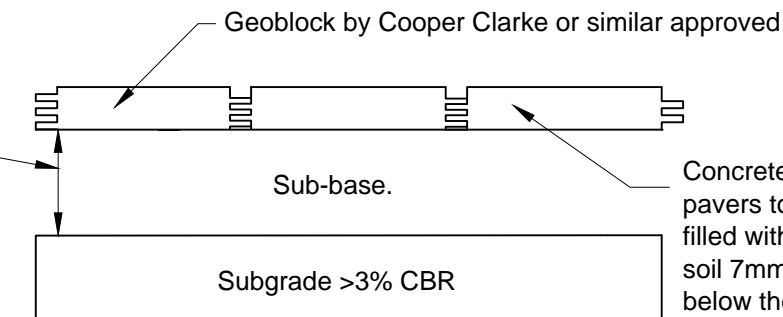


Base as above.

End Elevation

Grass Pavers (Concrete) (Marshalls)

	Polyethylene Grass Pavers		
	Type A.	Type B.	Type C.
	Service Road.	Service Road.	Parking Bays.
Use.	Occasional Use 30 Tonne Gross Load.	Occasional Use 7.6 Tonne Gross Load.	Cars and Vans.
Sub - Base.	150 mm mixture of 20% soil and 80% sand or gravel.	100mm mixture of 20% soil and 80% sand or gravel.	50mm mixture of 20% soil and 80% sand or gravel.
Dimension of Geoblock - Nominal(mm) 925 X 310 X 50.			



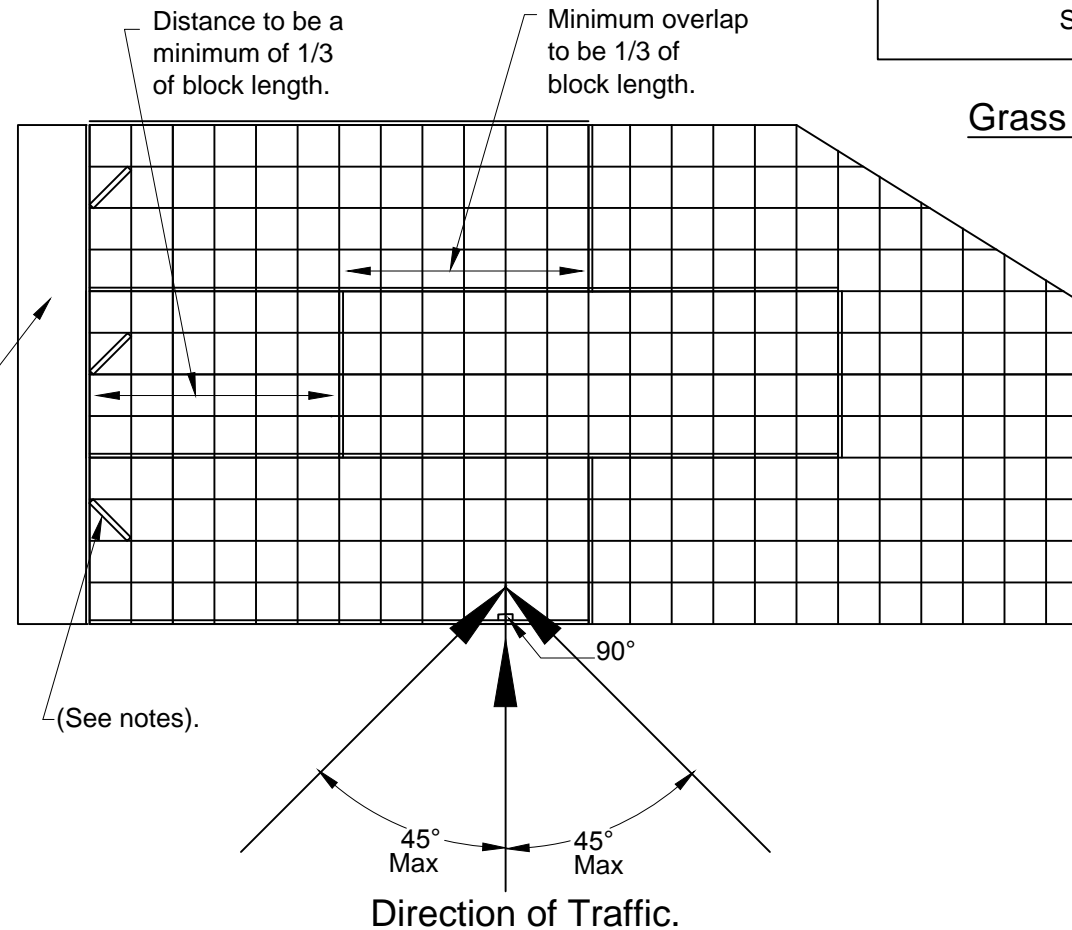
A,B,C
(Refer to table)

Sub-base.

Concrete grass pavers to be filled with top-soil 7mm-10mm below the top surface(see notes)

Grass Pavers (Polyethylene) (Geoblock)

Kerb or other permanent edge restraint.



Notes

1. All dimensions are in millimetres.
2. Geoblock staking pins should be driven into the sub-base and anchored into the bottom of the open cell. A staking pin should be used in each block on open edges where no edge restraint is used for example kerbs or walls etc.
3. Direction of traffic only applies to Geoblock grass protection systems.
4. If turfing is preferred, a light sprinkling of top-soil should be applied and the turf laid on top of the Geoblock installation. This is then cut into the cells with a heavy roller, to place the root zone 7-10mm below the upper surface of the blocks.
5. Some items on this Standard Detail are heavy. Attention is drawn to the H.S.E. guidance on Manual Handling of heavy objects. Contractors are required to give details in their Health and Safety Plan of how they intend to operate within the H.S.E. guidance. The Approximate weights of items on this Standard Detail, where known by the Designer, are given for guidance only.