



# ECONOMIC GROWTH

# GROWTH PROGRAMME & STRATEGY TEAM

## WHAT WE DO

- DELIVER INFRASTRUCTURE, GROWTH, REGENERATION & MARKET TOWN RESILIENCE
- IMPROVE DIGITAL CONNECTIVITY - BROADBAND AND MOBILE PHONE COVERAGE
- DEVELOP PARTNERSHIPS TO ACHIEVE GROWTH INITIATIVES - STRATEGIES AND PROJECTS
- INSTIGATE, DEVELOP AND SUBMIT FUNDING BIDS AND BUSINESS CASES
- PLACE SHAPING TO IMPROVE QUALITY OF LIFE, ENABLE GROWTH AND SUPPORT SUSTAINABLE COMMUNITIES

## OUR AIMS

### Strategic Locations

- Increase in number of households with access to ultrafast broadband and 4 and 5G mobile reception
- Net housing completions
- Investment in strategic infrastructure
- Employment land brought forward
- Town centre vacancy rates
- Town centre footfall

## ACHIEVEMENTS

- CREATION, DEVELOPMENT AND DELIVERY OF ECONOMIC GROWTH STRATEGY 2022 - 2027
- EXTERNAL FUNDING SUCCESSES TOTALLING CIRCA £91M, INCLUDING:
  - £50M FOR PROJECT GIGABIT
  - £18.7M LEVELLING UP FOR RIVERSIDE
  - £15M FOR HOUSING & EMPLOYMENT DEVELOPMENT OSWESTRY
- 99% SUPERFAST BROADBAND COVERAGE
- ESTABLISHED CAPITAL DELIVERY PROJECT MANAGEMENT OFFICE (PMO)
- DEVELOPED STRATEGIC PARTNERSHIPS WITH LOCAL STAKEHOLDERS E.G. SHROPSHIRE ECONOMIC PARTNERSHIP, WEM, BRIDGNORTH

### SHROPSHIRE'S ECONOMIC GROWTH STRATEGY

2022 - 2027

### THE VISION FOR SHROPSHIRE

*Working together with our business communities and stakeholders, and by utilising our unique environment and high-quality assets, we will co-create a connected, competitive, sustainable and inclusive economy: one that is nationally recognised where businesses and residents are thriving, healthy and resilient.*

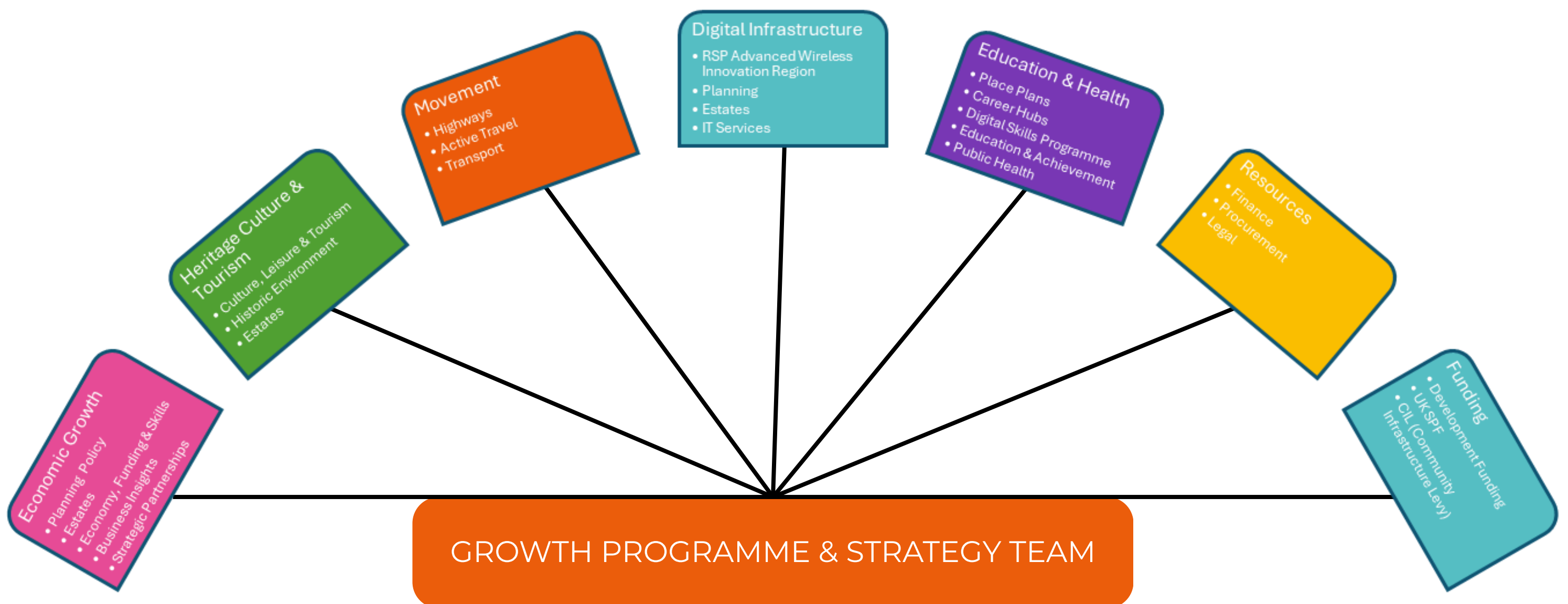
## EXTERNAL PARTNERSHIPS



# CURRENT PROJECTS

- MAINTAIN PLACE PLANS FOR THE INFRASTRUCTURE REQUIREMENTS TO SUPPORT DEVELOPMENT ACROSS SHROPSHIRE
- DELIVERY OF SHREWSBURY MOVEMENT & PUBLIC SPACE STRATEGY
- PROJECT GIGABIT
- SHREWSBURY NORTHERN CORRIDOR REGENERATION
- OSWESTRY INNOVATION PARK
- UK SPF FUNDED DELIVERY OF E-BIKES - SHREWSBURY MOVES
- SHREWSBURY TOWN CENTRE REGENERATION: SMITHFIELD RIVERSIDE - PMO & USES
- SHREWSBURY DESIGN CODE
- MARKET TOWN REGENERATION PROGRAMME DEVELOPMENT
  - WEM - WHITE HORSE
  - OSWESTRY - CAMBRIAN BUILDING/HAZ
  - MARKET TOWNS COLLECTIVE
  - MARKET TOWN STAKEHOLDER GROUPS

# COLLABORATIVE WORKING



# THE TEAM



**Sarah Jones** - Growth Programme & Strategy Manager

sarah.a.jones@shropshire.gov.uk



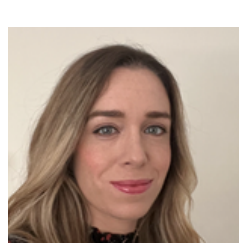
**Eloise Allen** - Project Support Officer

eloise.allen@shropshire.gov.uk



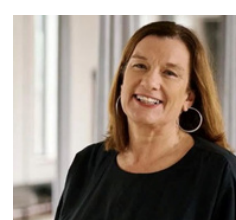
**Katharine Bevan** - Programme Technical Support Officer

katharine.bevan@shropshire.gov.uk



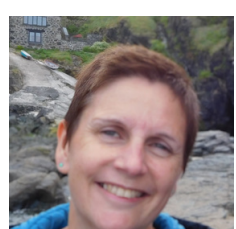
**Helen Davies** - Programme Technical Support Officer

helen.v.davies@shropshire.gov.uk



**Claire Evans** - Senior Programme Officer

claire.evans@shropshire.gov.uk



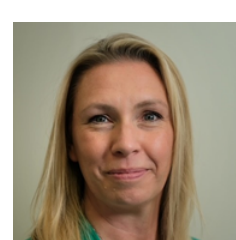
**Joe Bubb** - Senior Programme Officer

joe.bubb@shropshire.gov.uk



**Emma Williams** - Senior Officer, Place Shaping

emma.a.williams@shropshire.gov.uk



**Tracy Woods** - Senior Project Officer

tracy.woods@shropshire.gov.uk



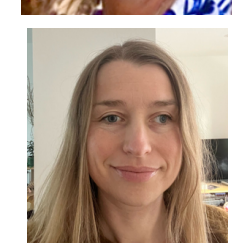
**Ben Walker** - Senior Programme Officer, Digital Infrastructure

ben.walker@shropshire.gov.uk



**Tracy Johnson** - Place Plan Officer

tracy.johnson@shropshire.gov.uk



**Lucy Roberts** - Place Plan Officer

lucy.roberts@shropshire.gov.uk



**Mathew Mead** - Place Plan Officer

mathew.mead@shropshire.gov.uk