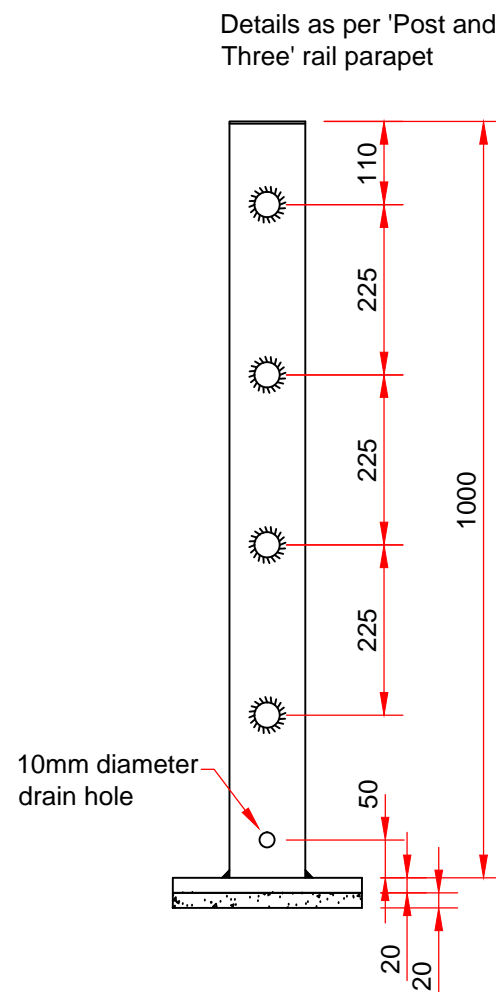
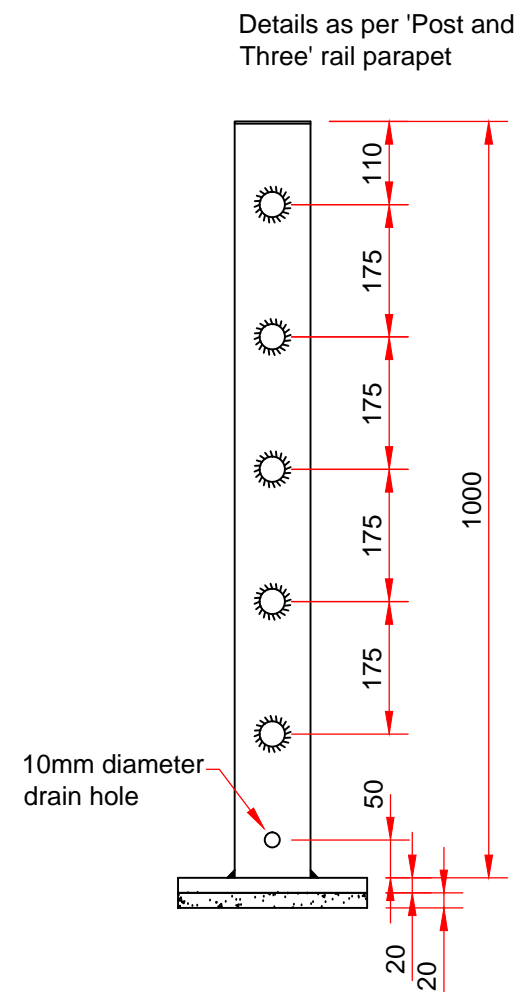


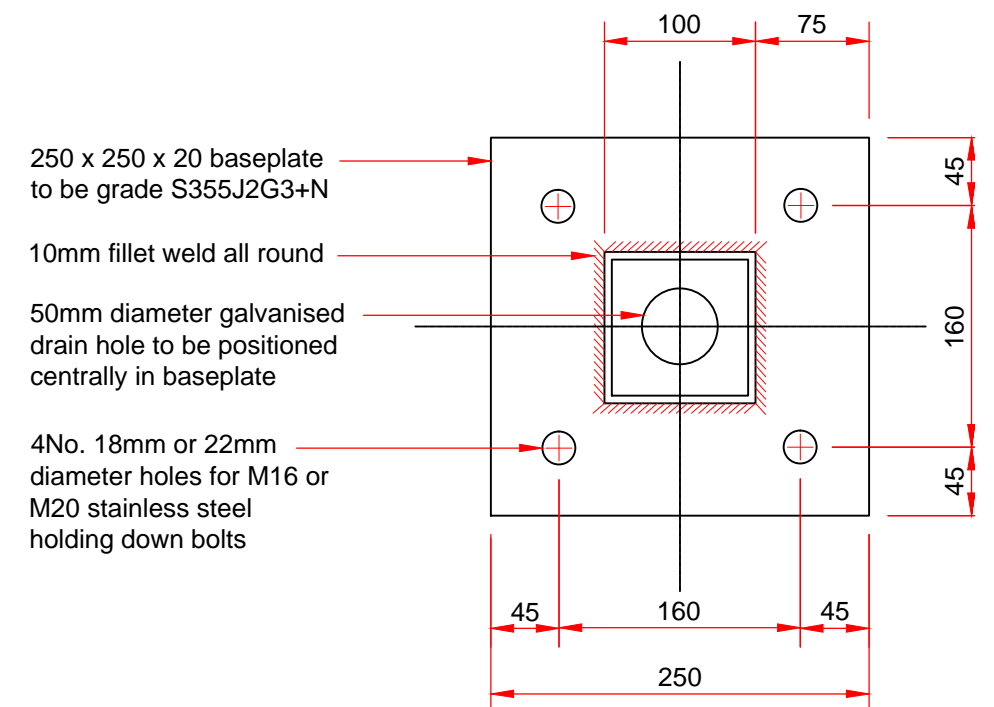
Post and Three Rail Parapet
Scale 1:10



Post and Four Rail Parapet
Scale 1:10



Post and Five Rail Parapet
Scale 1:10



PLAN ON SHS BASE PLATE
Scale 1:5

Notes

1. All steelwork to be galvanized to BS EN ISO 1461:1999.
2. Steel sections to be in accordance with BS EN 10025 & 10210.
3. Parapets should be fixed using grouted anchors. The bar should be M20 stainless steel bar Grade 316 (1.4429 to BS EN 10088-1). Bar to be embedded minimum 150mm into parapet coping and fixed using non-shrink injectable cementitious grout minimum compressive strength 50N/mm². Nylon 'top hat' washers to be used to separate stainless and galvanized steel.



Standard Detail Bespoke Steel Parapets

Version	Amendment	Date
Checked By: TRE	Drawing Number: SD-400-01	Version: -
Date Issued: Oct 16		