



**PUBLIC PATH DIVERSION AND DEFINITIVE MAP
AND STATEMENT MODIFICATION ORDER**

**TOWN AND COUNTRY PLANNING ACT 1990, SECTION 257
WILDLIFE AND COUNTRYSIDE ACT 1981, SECTION 53(A)(2)
THE SHROPSHIRE COUNCIL (FOOTPATH UN1 (PARTS)
TOWN OF SHREWSBURY) PUBLIC PATH DIVERSION ORDER 2024.**

This order is made by the Shropshire Council ("the Council") under section 257 of the Town and Country Planning Act 1990 because it is satisfied that it is necessary to divert the footpath to which this order relates in order to enable development to be carried out in accordance with planning permission granted under Part III of the Town and Country Planning Act 1990 under planning reference 22/04029/FUL to enable development of commercial development to include warehousing and trade units, storage and distribution facilities, offices and a food outlet together with associated car parking and landscaping.

This order is also made under section 53A(2) of the Wildlife and Countryside Act 1981 ("the 1981 Act") because it appears to the authority that the Shropshire definitive map and statement require modification in consequence of the occurrence of an event specified in section 53(3)(a)(i) of the 1981 Act, namely, the diversion (as authorised by this order) of a highway hitherto shown or required to be shown in the map and statement.

BY THIS ORDER:

1. The footpath over the land shown by a bold black line on the attached map and described in Part 1 of the Schedule to this order ("the Schedule") shall be diverted, and the Shropshire definitive map and statement shall be modified as provided below.

2. There shall be created to the reasonable satisfaction of the Shropshire Council an alternative highway for use as a replacement for the said footpath as provided in Part 2 of the Schedule and shown by bold black dashes on the attached map.
3. The Owner hereby covenants with the Council that the Owner and the successors in title shall always maintain the footpath between points C to B and D to E in good repair and in a fit condition for use by the public as a footpath.
4. The diversion of the footpath shall have effect on the date on which Shropshire Council certify that the terms of Article 2 above have been complied with and upon occurrence of that diversion the Shropshire definitive map shall be modified by deleting from it the way referred to in paragraph 1 of this order and the way referred to in paragraph 2 of this order shall be added to it and the definitive statement shall be modified as described in Part 3 of the schedule.
5. Where immediately before the date on which the footpath is diverted there is apparatus under, in, on, over, along or across it belonging to statutory undertakers for the purpose of carrying on their undertaking, the undertakers shall continue to have the same rights in respect of the apparatus as they then had.

SCHEDULE

PART I

Description of site of existing path or way

The full width of that part of FP UN1 leaving point A on the Order map at grid reference SJ 4941 0989 running in a general northerly direction to point B on the Order map at grid reference SJ 4939 0998. A distance of approximately 94 metres.

The full width of that part of FP UN1 leaving Point D on the Order map at grid reference SJ 4946 1002 running in a general ENE direction to point E on the Order map at grid reference SJ 4950 1004. A distance of approximately 50 metres.

PART 2

Description of site of alternative highway

From point C on the Order map at grid reference SJ 4940 0989 running in a general northerly, WNW then NNW direction on a 2-metre-wide surfaced path then in a general ENE direction along the tarmac footway alongside the access road to re-join with the definitive line of FP UN1 at point B on the Order map at grid reference SJ 4939 0998. A total distance of approximately 110 metres with a width of 2 metres throughout its length.

leaving FP UN1 at point D on the Order map at grid reference SJ 4946 1002 running in a general ENE direction along the tarmac footway alongside the access road then ESE direction to re-join the definitive line of FP UN1 at point E on the Order map at grid reference SJ 4950 1004. A distance of approximately 51 metres with a width of 2 metres throughout.

PART 3

Modification of Definitive Statement

From point C on the Order map at grid reference SJ 4940 0989 running in a general northerly, WNW then NNW direction on a 2-metre-wide surfaced path then in a general ENE direction along the tarmac footway alongside the access road to re-join with the definitive line of FP UN1 at point B on the Order map at grid reference SJ 4939 0998. A total distance of approximately 110 metres with a width of 2 metres throughout its length.

leaving FP UN1 at point D on the Order map at grid reference SJ 4946 1002 running in a general ENE direction along the tarmac footway alongside the access road then ESE direction to re-join the definitive line of FP UN1 at point E on the Order map at grid reference SJ 4950 1004. A distance of approximately 51 metres with a width of 2 metres throughout.

There is a Shropshire definitive statement for various parts of FP UN1 in the Town of Shrewsbury.

Variation of Particulars of Path of Way

None

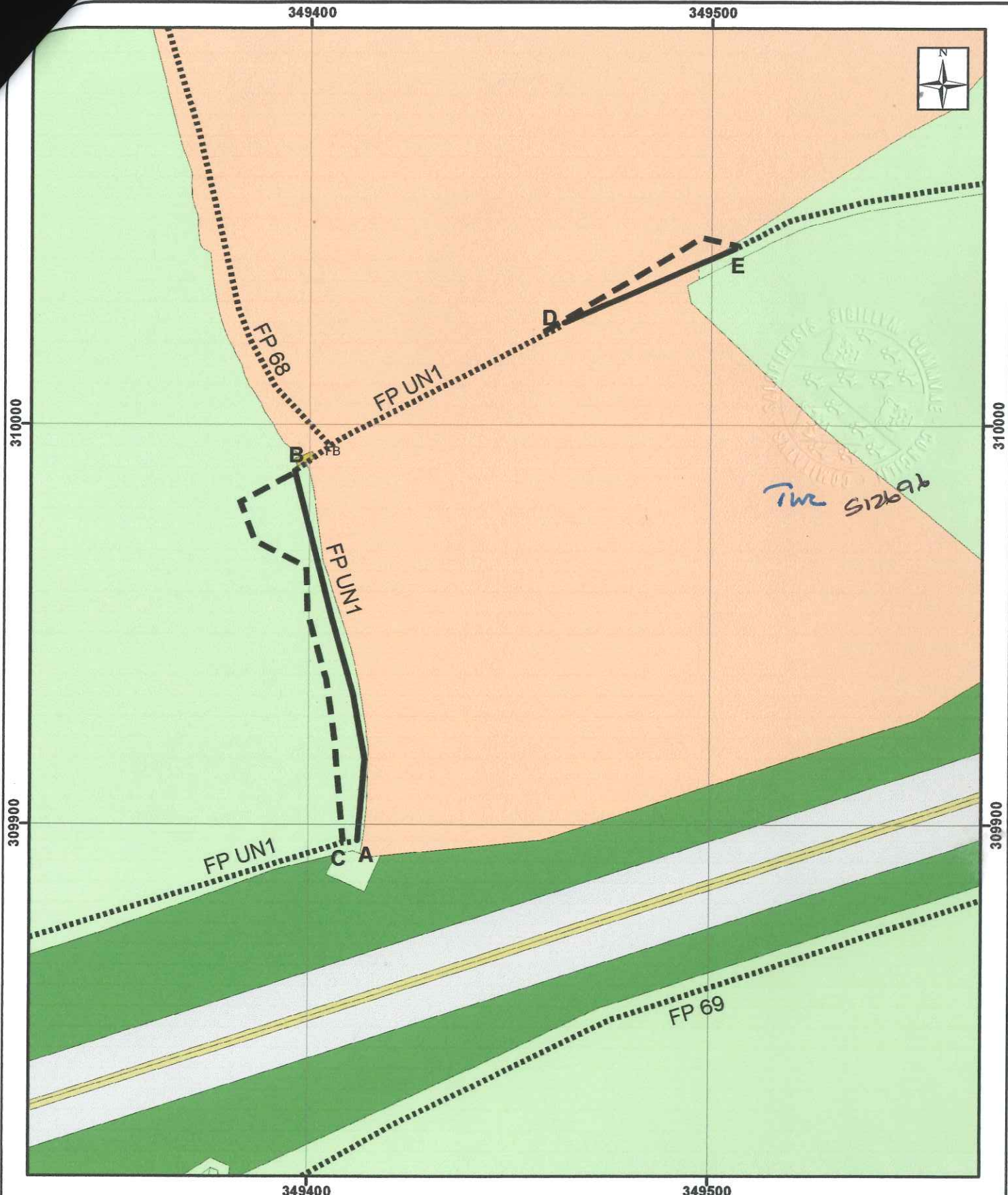
Executed as a deed by affixing the
Common Seal of Shropshire
Council.

In the presence of:

Tim Collard

Tim Collard
Assistant Director, Legal and Governance
(Monitoring Officer)

S126916



The Shirehall, Abbey Foregate
Shrewsbury, Shropshire, SY2 6ND

Key

- Route to be created - - - - -
- Route to be extinguished ————
- Existing to remain ········

Scale: 1:1,250

© Crown copyright (2024)
Ordnance Survey AC0000808715
You are not permitted to copy, sub-licence, distribute
or sell any of this data to third parties in any form.