

# Supported Internships

## SENCO Network

Sarah Sweeney & Charlotte Kelly

5 Feb 2025



# Education Health and Care plans (EHCP's)

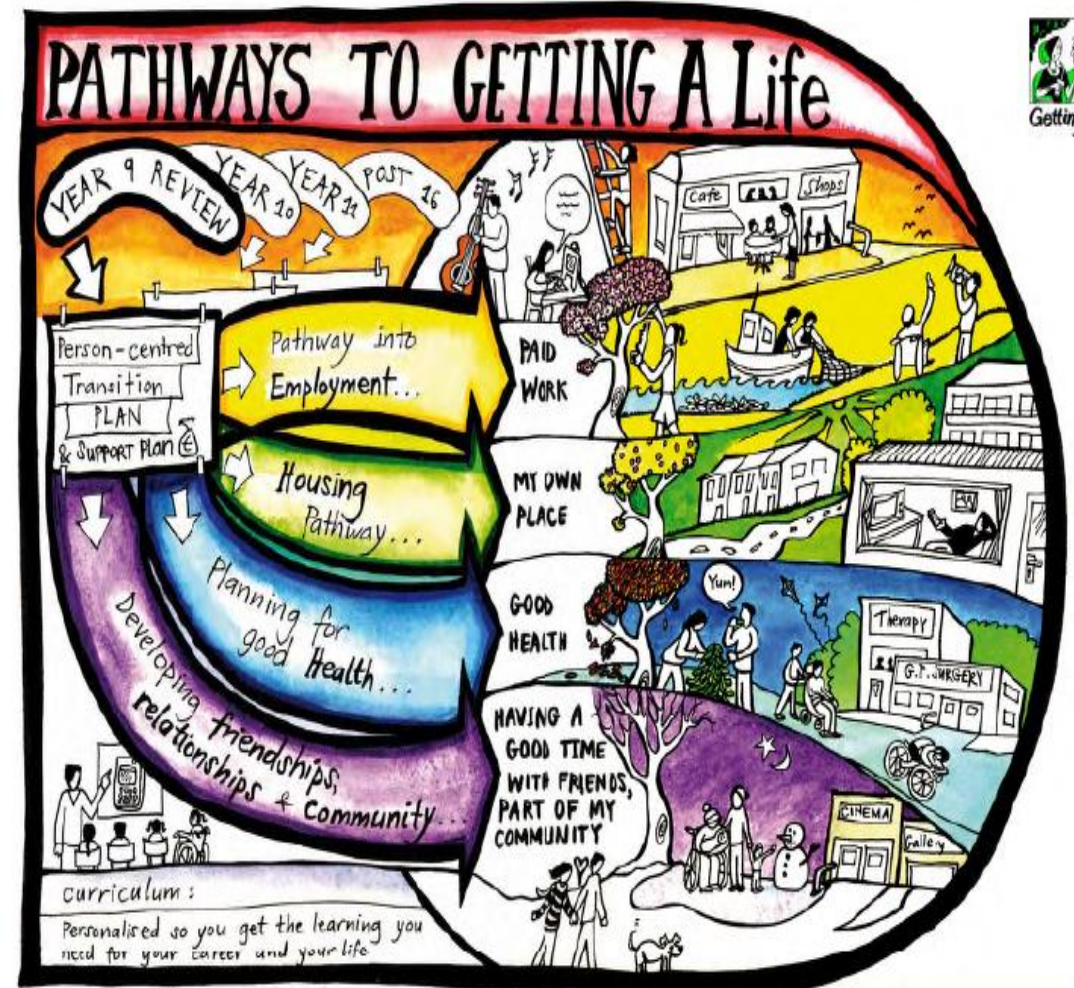
Preparation for Adulthood (PFA) should be embedded from the earliest years.

Outcomes in EHCP plans to link to the four preparing for adulthood outcomes.

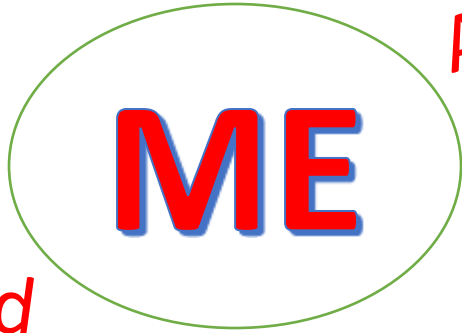
Strengthened from year 9

Information and guidance needs to be person centred following Gatsby.

- ✓ Employment and higher education
- ✓ Independent living
- ✓ Participation in society
- ✓ Being as healthy as possible in adult life



Transition to adult life



RESPONSIBILITIES

Person centered

Money

Study Programmes

Vocational

Apprenticeship Academic

Supported Internship

Training Provider

FE College

Youth Service

School 6<sup>th</sup> Form

6<sup>th</sup> Form College

Specialist School 6<sup>th</sup> Form

Independent Specialist

AMBITIOUS

JYS

CLA

Likes

What skills do I have

Dislikes

Work Uniform

What skills do I need

What support do I need

What do I need to know

PLAN

Link Courses

Work experience

Familiarisation visits

Sharing information

Careers advice

Build on prior

Self help strategies

Professionals/support who and what

Benefits

Personal care

Skills

Assessments

Training

Health/being healthy

Travel Training

Job search

Community participation

Social

Relationships

Care

Housing

CV

Children's Services Adult Services

Independence

Continuing Health Care

Higher Travel

Safety Risks

Interviews

Aspirations for paid employment

Job Centre

Work & Part-Time Study

## Supported internship – what are they?

- For Students with an EHCP aged 16 -25yrs
- Structured work-based Further Education (FE) Study programme
- 70% of the time is spent at an employer base
- Programme duration: Minimum of 6 months to a full academic year
- Facilitated by a Job Coach
- Travel Training
- Single internships and DFN project - SCG (5 days)





# Aims and outcomes

All practitioners should share this presumption.

- Increase opportunities for young people to move into sustained paid employment
- Build confidence and skills that employers require
- Enable young people to be financially independent,
- Opportunities to gain social skills and friendships
- Address the issue of 'Learner Churn' or revolving door syndrome
- Completion should lead towards paid employment and the ceasing of the EHC plan

With the right support young people are capable of sustaining paid employment



# Statistics

National average for adults (18-64) with a learning disability in paid employment (22/23) = 4.8%  
Shropshire = 7.2%  
(ASCOF)

The disability (including physical & health) employment rate for those in paid employment was 53.0% in 2024, compared to 81.6% for non-disabled people

Shropshire have doubled the number of supported internship starts in 2.5 years

# More information

- [Supported internships | Shropshire Council](#)

(Further updated to provide information for settings)

Information for providers and colleges

- [Preparation for Adulthood \(PfA\) | Whole School SEND](#)
- [Internships Work: Resources for Providers & Colleges – NDTi](#)
- [Preparing For Adulthood Guides and Toolkits](#)
- [Providing supported internships for young people with an EHC plan - GOV.UK](#)
- [Preparing for Adulthood - NDTi](#)

Information for young people and families

- [Internships Work: Resources for Young People & Families – NDTi](#)





# PATHWAY IN TO PAID WORK

## Nursery onwards



Person-centred planning to ensure plan is based on what matters to me.

Aspirations for now and in the future.



Begin to plan vocational profiling (year 10) and work experience (year 11)

Information about employment pathways.



Advocacy



Complete vocational profile and plan work experience.



Great careers education, Information, advice and guidance



## Year 11



Work experience based on vocational profile

Plan post 16 pathway and which provider can deliver this.

Amend plan to include employment pathway and support.



Study programme leading to...



Supported Internship  
Apprenticeship  
Supported Employment

WHERE ?

General FE college  
Special college  
Training provider



## Post 19

Access to Work for job coach support.



Reasonable Adjustments



Person-centred planning  
Careers education, information, advice and guidance  
Partnerships  
High quality curriculum  
Employer engagement  
Communication and information  
Training and support for all

Personal budgets for job coaching.


Have social care and health staff an awareness about the importance of raising aspirations and support this through their work?

Read/accessible information in the local offer about support for employment?

Supported employment agencies or local supported internships attending annual reviews.



# Keiran's journey



if you get the chance,  
take sports internship, definitely do it.

# SaTH Sept 2023



# SaTH Sept 2024



# Cosford Sept 2024





Shropshire  
Council

**Thank you and questions**