

Notes:

Section A-A

1. This detail is applicable to both standard and wide base posts.

2. Concrete to be mix ST2.

3. 50mm UPVC cable duct to be used on illuminated traffic signs. Pull cord to be provided through duct into post base unit.

4. Direction of duct as directed by service manager.

5. Foundation sizes given in tables apply for mounting heights up to 2.1 metres, or as specified on the task order.

6. Length L on foundation slab to be placed perpendicular to sign face.

7. All dimensions are in millimetres.

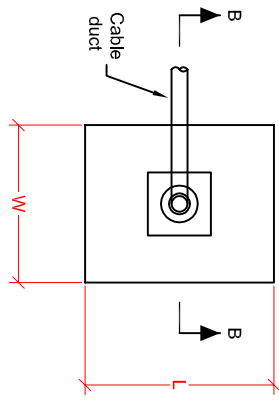
8. If possible, the wide base post inspection chamber should be mounted on the opposite side to the approaching traffic.

9. Alternative dimensions for sign plates, posts and foundations may be specified, as stated on the task order.

Size Ht (mm)	600	750	900
Post dia.(mm)	76	76	76
Size (m)			
W	0.35	0.35	0.35
L	0.6	0.6	0.6
D	0.6	0.6	0.6
Volume (cu.m)	0.13	0.13	0.13

Size Ht (mm)	600	750	900
Post dia.(mm)	76	76	89
Size (m)			
W	0.35	0.35	0.35
L	0.6	0.6	0.6
D	0.6	0.6	0.6
Volume (cu.m)	0.13	0.13	0.13

Section B-B



Plan

Drawing Title:



Standard Detail

Wide Base Post & Foundation

Version	Additional note No. 9 added	Version
A		11/05/17
Version	Amendment	Date
Checked By:	Drawing Number:	Version:
R.Harman	SD-1200-08	A
Oct 16		